



A large collection of various electronic and mechanical components, including a black bucket, a black pump, a white digital display, a green circuit board, a black fan, a white sensor, a black battery, and various wires and connectors.



Table of Contents

| | |
|---|-------|
| General Terms and Conditions..... | 3 |
| Contact Information | 4 |
| Parts Kits..... | 5 |
| Tankless Accessories..... | 6-10 |
| Tankless Venting | 11-14 |
| Commercial Common Venting | 15-19 |
| Parts for RTGH-S, RTGH-SR Series | 20-21 |
| Parts for RTGH-DVL3 Series | 22-23 |
| Parts for RTG-DVL3 Series | 24-25 |
| Parts for RTG-XL3 Series | 26-27 |
| Parts for Commercial RTGH-C95DVL, RTGH-CM95DVL Series | 28-29 |
| Parts for Commercial RTGH-C95XL, RTGH-CM95XL Series | 30-31 |
| Tankless Model Cross Reference | 32-33 |
| Parts for RTGH-RH10DVL, RTGH-RH11DVL Series (out of production)..... | 34-35 |
| Parts for RTGH-84DVL-1 or 2, RTGH-90DVL-1 or 2, RTGH-95DVL-1 or 2 Series (out of production) | 36-37 |
| Parts for RTGH-84XL-1 or 2, RTGH-90XL-1 or 2, RTGH-95XL-1 or 2 Series (out of production) | 38-39 |
| Parts for RTG-64DVL-1, RTG-70DVL-1, RTG-84DVL-1, RTG-95DVL-1 Series (out of production) | 40-41 |
| Parts for RTG-64XL-1, RTG-70XL-1, RTG-84XL-1, RTG-95XL-1 Series (out of production) | 42-43 |
| Parts for RTGH-84 RTGH-90, RTGH-95 DV & DVL Series (out of production) | 44-45 |
| Parts for RTGH-84, RTGH-90, RTGH-95 X & XL Series (out of production) | 46-47 |
| Parts for RTG-64, RTG-84, RTG-95, DV and DVL Series (out of production) | 48-49 |
| Parts for RTG-64, RTG-84, RTG-95, X and XL Series (out of production) | 50-51 |

General Terms and Conditions

A comprehensive catalog of approved replacement parts

for Rheem®, Ruud®, Rheem®-Ruud®, Richmond®, EcoSense™, Paloma®, EcoSmart, WaiWela and Raypak tankless gas water heaters*.

Freight Allowance

Please see the Tankless Parts and Accessories Price Sheet for Freight Allowances.

Taxes

Prices are subject to the addition of any tax imposed by any present or future Federal, State, County or Municipal law on the sale of such material, unless we have a tax exemption certificate on file.

Acceptance of Orders

All orders are subject to final approval on the terms and conditions contained in our standard customer acknowledgment form.

Materials Return

Saleable, current component parts in a new or unused condition must have prior authorization by the Parts Packaging Supervisor or Customer Service before being returned. Parts may only be considered for return within 90 days from the original invoice date. Invoice numbers must be provided to Customer Service prior to obtaining a return authorization number. All parts returned without prior authorization will be destroyed or sent back to the sender at their expense. All returns will be subject to our inspection and a 25% restocking charge. Returned parts that are damaged or in a condition that prevents resale will not be credited. Service/Warranty Parts returned in accordance with warranty claim provisions do not require prior authorization, but will be subject to our inspection. See Price Sheet for Additional Conditions.

Parts Warranty

All tankless service parts are warranted for the remainder of the parts warranty covering the product they are being used to service. If no warranty is remaining on said product then the warranty will be for a period of 90 days from the date of purchase. Contact Technical Service for warranty information.

Accessories Warranty

All tankless accessories are warranted for a period of 1 year from the date of original purchase unless covered by a manufacturers warranty. Contact Technical Service for warranty information.

NOTE: *Tankless parts are excluded from all wholesaler volume discounts.*

Tankless Water Heater Unit Conversions

- * For Ruud, replace RTG with RUTG
- * For Richmond, replace RTG with RMTG
- * For all other brands, see cross reference on pages 32-33.

Contact Information

CONTACT INFORMATION

TANKLESS GAS:

Customer Service

Phone: 800.621.5622

Product Information/Online Lookup

rheemparts.com

parts.rheem.com

Warranty

customerservice@rheem.com

Technical Service

Phone: 800.432.8373

Email: TanklessGasTech@rheem.com

To Place an Order

Phone: 800.621.5622

Fax: 800.535.9538

ECONET®:

Technical Support

Phone: 800.255.2388

Monday - Friday, 8am - 8pm, EST

TANKLESS ELECTRIC:

Customer/Technical Support

800.374.8806

Hours of Operation

Monday - Friday, 9am - 5pm, EST

Email: support@rheemtankless.us



Based in Randleman, North Carolina with an 300,000 sq. ft. distribution center, the Replacement Parts Division provides products and services including the support of new equipment sales by providing OEM and replacement parts for Rheem equipment. To better support the entire country with faster delivery times and better stock levels, a second, 90,000 sq. ft. warehouse is located in West Valley, UT, primarily serving the west coast with their service parts and accessory needs. In addition to OEM, we sell and market aftermarket parts and products that are included in the installation, maintenance and servicing of HVAC equipment, water heaters and other residential power equipment.

Parts Kits (out of production)

Tankless Gas Water Heater Parts Kits

for Rheem Tankless Water Heaters

Rheem Tankless Gas Water Heater Service Parts Kits –

These kits, designed with the contractor in mind, provide all the basic parts necessary for a complete repair of a Rheem tankless gas water heater.

These kits include tankless replacement parts, such as:

| | |
|--------------------|----------------------|
| Control Board | Gas Inlet Connector |
| Thermistors | Blower Motor |
| Gas Valve | Water Control Valves |
| Flame Rods | Drain Plug |
| Flame Rod Wires | Inlet Water Filter |
| Ignitor Coil | Screw Kit |
| Ignitor Rod | O-ring Kit |
| Gas Valve Assembly | |

For full list of replacement parts, visit Rheemparts.com

PROTECH™



PROTECH PD966349 - Non-Condensing direct vent models (RTG-95DVL-1, RTG-84DVL-1, RTG-64DVL-1)

PROTECH PD966350 - Non-Condensing outdoor models (RTG-95XL-1, RTG-84XL-1, RTG-64XL-1)

PROTECH PD966351 - Condensing -1 models (RTGH-95DVL-1, RTGH-90DVL-1, RTGH-84DVL-1) (RTGH-95XL-1, RTGH-90XL-1, RTGH-84XL-1) (RTGH-C95DVL, RTGH-C95XL, RTGH-CM95DVL, RTGH-CM95XL)

PROTECH PD966377 - Condensing -2 models (RTGH-95DVL-2, RTGH-90DVL-2, RTGH-84DVL-2, RTGH-68DVL-2) (RTGH-95XL-2, RTGH-90XL-2, RTGH-84XL-2, RTGH-68XL-2)

PROTECH PD966376 - Condensing models with built-in recirculation (RTGH-RH models)

PROTECH PD966332 - Non-Condensing direct vent models (RTG-95DVL, RTG-84DVL, RTG-64DVL)

PROTECH PD966333 - Non-Condensing outdoor models (RTG-95XL, RTG-84XL, RTG-64XL)

PROTECH PD966334 - Condensing models (RTGH-95DVL, RTGH-90DVL, RTGH-84DVL) (RTGH-95XL, RTGH-90XL, RTGH-84XL)

Tankless Accessories

FINISH AND APPEARANCE

Pipe Covers

Enhance an indoor or outdoor installation by concealing the piping beneath the water heater while protecting from tampering and weather conditions. All pipe covers have a grey finish to match the tankless heater.



| MODEL NUMBER | DESCRIPTION | COMPATIBLE WITH |
|--------------|---|--|
| RTG20227 | Pipe Cover - Condensing Indoor & Outdoor 16-1/2" tall | All RTGH-2 models (excluding RTGH-RH and RTGH-S(R) models) |
| RTG20217DVG | Pipe Cover - Non-Condensing Indoor 16-1/2" tall | RTG-95DV, RTG-84DV, RTG-64DV, RTG-66DV models |
| RTG20217XG | Pipe Cover - Non-Condensing Outdoor 16-1/2" tall | RTG-95X, RTG-84X, RTG-64X, RTG-66X models |
| RTG20315* | Pipe Cover - Condensing with Recirculation | RTGH-RH models |
| RTG20322 | Pipe Cover - Condensing with Recirculation 16-1/2" tall | RTGH-S(R) models |
| RTG20329AT | Condensing Pipe Cover Assembly | RTGH-DV-3 Models |
| RTG20330AJ | Non-Condensing Pipe Cover Assembly | RTG-DV/X-3 models |

*This part is fulfilled through Rheem Water Heating Division. Not stocked at RPD.

Recess Boxes

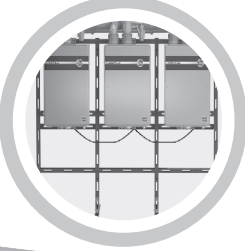
Enhance an outdoor installation by protecting the tankless unit from damage, tampering and weather. All recess boxes have a grey finish to match the tankless heater.



| MODEL NUMBER | DESCRIPTION | COMPATIBLE WITH |
|--------------|--|---|
| RTG20226 | Recess Box - Condensing Outdoor Rough in: 46" H, 19-1/2" W, 9-1/2" D | RTGH-84, RTGH-90, RTGH-95 X and XL models |
| RTG20253 | Recess Box - Condensing Outdoor, in Stucco rough in: 46" H, 19-1/2" W, 9-1/2" D | RTGH-84, RTGH-90, RTGH-95 X and XL models |
| RTG20218 | Recess Box - Non-Condensing Outdoor Rough in: 42" H, 14-1/2" W, 8-1/2" D | RTG-64, RTG-84, RTG-95 X and XL models |
| RTG20248 | Recess Box - Non-Condensing Outdoor, in Stucco Rough in: 42" H, 14-1/2" W, 8-1/2" D | RTG-64XL, RTG-84XL, RTG-95XL models |
| RTG20243 | Recess Box - Non-Condensing Outdoor Rough in: 42" H, 14-1/2" W, 8-1/2" D | RTG-95, RTG-84, RTG-64 X models |
| RTG20238 | Retrofit Kit for 74X Recess Box Allows newer models to be used in first generation 74 Series without changing the box out. Includes: 2 brackets, hardware & instructions | RTG-95XL, RTG-84XL, RTG-64XL models |
| RTG20306 | Recess Box Door Kit - Condensing Outdoor | All RTGH X -2 models |
| RTG20307 | Recess Box Door Kit - Non-Condensing Outdoor | All RTG X -1 models |
| RTG20308 | Recess Box Door Kit - Non-Condensing Indoor | All RTG DV -1 models |
| RTG20329AU | Recess Box Assy - Condensing Outdoor | RTGH-DV-3 Models |
| RTG20330AK | Recess Box Assy - Non-Condensing Outdoor | RTG-DV/X-3 models |

Mounting

The flexible rack system is expandable to hold up to 20 units (with multiple racks) and can be used in three configurations: wall mounted or free standing side to side or back to back.



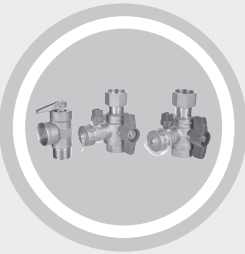
| MODEL NUMBER | DESCRIPTION | COMPATIBLE WITH |
|--------------|--|--|
| RTG20304 | EZ-Rack Kit - Easy to build rack for free-standing or wall-mounted tankless unit installations. Holds 1-2 units per rack. | All RTG and RTGH models, Indoor or Outdoor |

Tankless Accessories

MAINTENANCE AND SERVICE

Valves

Tankless Service Valves allow for easy maintenance and service, such as flushing, for any tankless water heater. Pressure Relief Valve provides protection against excessive water pressure.



| MODEL NUMBER | DESCRIPTION | COMPATIBLE WITH |
|--------------|---|--|
| RTG20326 | Webstone Service Valves & Pressure Relief Valve Kit Contains hot and cold Webstone service valves plus Watts pressure relief valve. | All RTG and RTGH models, Indoor or Outdoor |
| RTG20264 | Webstone Cold Water Service Valve | |
| RTG20265 | Webstone Hot Water Service Valve | |
| AP12993C | Watts Pressure Relief Valve Rated 150 PSI - 3/4" threads (included in RTG20220AB) | |
| RTG20324 | Edison Cold Water Service Valve | |
| RTG20326 | Edison Service Valves & Pressure Relief Valve Kit | |

Flush Kit

Connects easily to tankless service valves for flushing the heat exchanger with white vinegar. Simple to use. Recommended flushing every 500 hours of use (1 to 1-1/2 years).



| MODEL NUMBER | DESCRIPTION | COMPATIBLE WITH |
|--------------|--|--|
| RTG20124 | Includes: 5-gallon bucket, submersible pump, and two hoses | All RTG and RTGH models, Indoor or Outdoor |

Water Treatment

Combat hard water and scale build-up. Unit features a clear housing allowing you to see when it's time to replace the cartridge.



| MODEL NUMBER | DESCRIPTION | COMPATIBLE WITH |
|--------------|---|---|
| RTG20251 | AllClear™ Water Treatment System Includes one cartridge | All RTG and RTGH models used for residential applications |
| RTG20252 | All Clear™ Replacement Cartridge | |

Condensate Management

Condensing tankless water heaters produce condensate that must be neutralized for safe disposal. Many RTGH models feature built-in condensate neutralizer, RTGH-RH model requires external accessory. Also required for condensate produced in common venting in Commercial Tankless applications.



| MODEL NUMBER | DESCRIPTION | COMPATIBLE WITH |
|--------------|--|----------------------------------|
| RTG20329AR | External Condensate Neutralizer Accessory With PVC connections | RTGH, RTGH-S, RTGH-RH models |
| AP16770 | Replacement Rocks for Condensate Neutralizer | SP12151 External Accessory |
| RXGY-A01 | External Condensate Neutralizer Accessory With flex tubing connections | RTGH-RH models or Common Venting |

Tankless Accessories

TANKLESS CONTROLS

Remote Control Options and EcoNet® Connectivity



To Convert Indoor Non-Wi-Fi Models to Wi-Fi, you must purchase the (1) Wi-Fi Display, (1) Display Wiring Harness, and (1) Leak Sensor Kit.

For outdoor models, you will need (1) Wi-Fi display, (1) Indoor display mount and the (1) Outdoor Wiring Harness (deactivates leak sensor).

Allow for easy temperature adjustment and maintenance information access. Connect your tankless water heater to EcoNet® for leak detection, auto shut-off, maintenance alerts, and temperature control from any smart device. Connect up to 3 remote controls, one of each type, to your tankless system for maximum control from multiple locations in the home.

| MODEL NUMBER | DESCRIPTION | COMPATIBLE WITH |
|--------------|--|---|
| RTG20006DW | UMC-117 Main Remote Control (generic) | Compatible with all RTG and RTGH models except RTGH-RH |
| RTG20006DU | USC1-117 Bath Remote Control (generic) | |
| RTG20006DV | USC2-117 Second Bath Remote Control (generic) | |
| RTG20009-1 | 10-ft Thermostat Wire, 1 pair 18AWG | |
| RTG20329AG | Wi-Fi display | Compatible with all RTG/RTGH-3 |
| RTG20329AH | Wi-Fi Display Wiring Harness | Compatible with: RTG-X-3 and/ RTGH-3 Outdoor models (indoor converted to outdoor) |
| RTG20329AK | Indoor mount for Wi-Fi display (Note: Outdoor wiring harness required) | Compatible with all RTG/RTGH-3 |
| RTG20329AF | Non-Wi-Fi display | Compatible With all RTG/RTGH-3 indoor (DV) and RTG-X-3 models |
| RTG20329AJ | Outdoor Wi-Fi Display Wiring Harness and Communication Cable (10ft) | Compatible with: RTGH-3 Outdoor models (indoor converted to outdoor) |
| RTG20329AL | Leak Sensor Kit | |
| PD415188 | Translator Kit (translator, jumper, leak cable & communication cable) | |

RECIRCULATION

Recirculation Pump Kits



AP17920

Get faster hot water at the tap by adding a recirculation pump to your tankless or tank water heater system.

| MODEL NUMBER | DESCRIPTION | COMPATIBLE WITH |
|--------------|--|---|
| AP17920 | Recirculation Pump Kit (Timer Based) | All RTG and RTGH models (excluding RTG-RC and RTGH-RH variants) |
| AP18403 | Demand Pump Kit Includes wired push button for activation | |
| AP18537 | Under the Sink Demand Pump Kit Includes wired push button for activation | |

Tankless Accessories

RECIRCULATION CONTINUED

On-Demand Recirculation Activation Accessories

For use with Demand Pump Kits and RTG-RC Tankless Gas Water Heaters.

| MODEL NUMBER | DESCRIPTION | COMPATIBLE WITH |
|--------------|-----------------------------|---|
| SP20861 | Wireless Remote Transmitter | AP18403 and AP18537 Demand Pump Kits and RTG-RC Tankless Gas Water Heaters. RTGH-SR |
| SP20862 | Motion Sensor Kit | |
| SP20863 | Wired Push Button | |



SP20861



SP20862



SP20863

Recirculation Activation Accessories

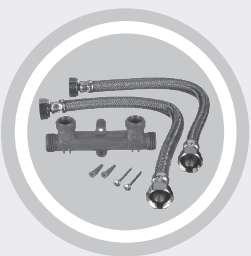
Converts RTGH-RH Tankless Gas Water Heaters to On-Demand Activation.



| MODEL NUMBER | DESCRIPTION | COMPATIBLE WITH |
|--------------|--------------------------------|-----------------|
| SP20941 | On-Demand Activation Accessory | RTGH-RH Models |

Crossover Valve

Converts existing cold water line to a return so no dedicated return line is required, allowing recirculation pump to be utilized with existing plumbing.



| MODEL NUMBER | DESCRIPTION | COMPATIBLE WITH |
|--------------|--|---|
| RTG20285 | Includes: Grundfos crossover valve, 2 tee fittings, instructions | Compatible with the new IKONIC RTGH-SR models |

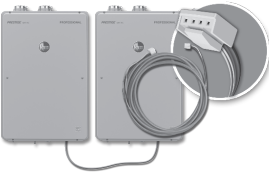
Tankless Accessories

MANIFOLD CONTROL SYSTEMS

Allow multiple identical RTG or RTGH tankless water heaters to be connected in a manifold. These kits allow multiple heaters to communicate and operate as a single system when one unit is not enough.

Connect TWO Units

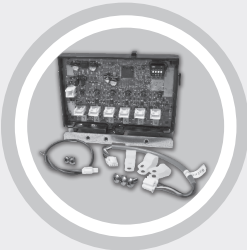
Connecting 2 units together requires just one (1) Cable.



| MODEL NUMBER | DESCRIPTION | COMPATIBLE WITH |
|--------------|--|--|
| RTG20040 | EZ-Link™ Cable 6-ft. cable with connectors and wire support clamps | RTG and RTGH models excluding -RH models |
| SP20892 | Quick Connect Cable | RTGH-RH models only |

Connect up to SIX Units

Connecting up to 6 units together requires one (1) MIC-6 Manifold Controller for the system, plus one (1) Type Q Manifold Control Cable for each tankless unit connected.



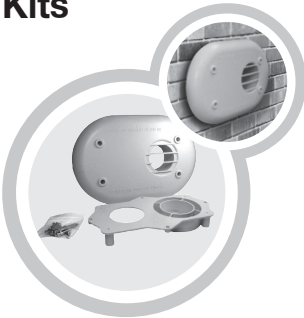
| MODEL NUMBER | DESCRIPTION | COMPATIBLE WITH |
|----------------------------|---|---|
| RTG20213A | MIC-6 Manifold Controller System Controller mounts inside a single tankless unit and connects to up to 5 additional units via Type Q cable for a total of 6 | RTG and RTGH models excluding -RH models |
| RTG20213B* | 1-ft. MIC Control Cable (Type Q) | |
| RTG20213C* | 6-ft. MIC Control Cable (Type Q) | |
| RCPN-AMP03-0013111101-0002 | RJ25 Communication Cable 72 inches long | Any RTG or RTGH model with EcoNet Translator installed for manifolding or Wi-Fi module connection |
| RCPN-AMP03-0013111101-0003 | RJ25 Communication Cable 48 inches long | |
| RCPN-AMP03-0013111101-0004 | RJ25 Communication Cable 240 inches long | |

*NOTE: These cables will not fit the MIC-185/MICS-180 System.

Tankless Venting

HIGH EFFICIENCY VENTING

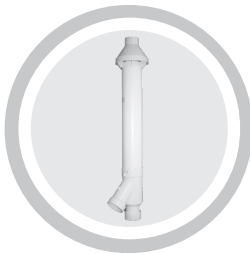
Condensing PVC Termination Kits



SP20286 & SP20285

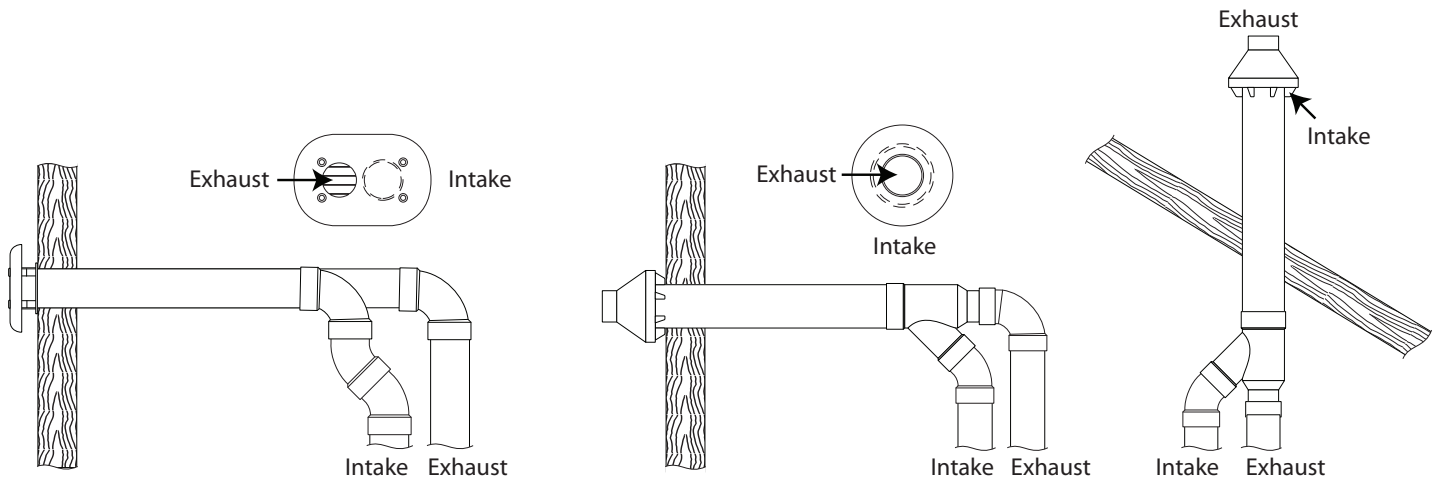
Compatible with All Condensing RTGH models.
Offers a clean installation of the intake and exhaust pipes of the condensing tankless water heater.

| MODEL NUMBER | DESCRIPTION | COMPATIBLE WITH |
|--------------|--|-------------------|
| SP20286 | Horizontal Vent Kit for 3" PVC – 11-3/4" Wide, 8" Tall, 2-1/2" Deep. Fits PVC, ABS piping | All RTGH models |
| SP20285 | Horizontal Vent Kit for 2" PVC – 11-3/4" Wide, 8" Tall, 2-1/2" Deep. Fits PVC, ABS piping | |
| SP21069E | Horizontal Vent Kit for 3" PVC – 13" Wide, 8" Tall, 2-1/2" Deep. Fits PVC, ABS piping | RTGH-S (R) models |
| SP21069G | Horizontal Vent Kit for 2" PVC – 13" Wide, 8" Tall, 2-1/2" Deep. Fits PVC, ABS piping | |



SP20245 & SP20897

| MODEL NUMBER | DESCRIPTION | COMPATIBLE WITH |
|--------------|---|--------------------------------------|
| SP20245 | Horizontal or Vertical Concentric Vent Termination for 3" PVC – 39" Long, 7-1/4" Diameter, 4-1/2" opening required. Fits PVC, ABS piping. 1/4" installation combining the intake and exhaust pipes into a single concentric vent termination | All RTGH models |
| SP20897 | Horizontal or Vertical Concentric Vent Termination for 2" PVC – 39" Long, 7-1/4" Diameter, 4-1/2" opening required. Fits PVC, ABS piping. 1/4" installation combining the intake and exhaust pipes into a single concentric vent termination | |
| SP20252 | 3" condensation Collar | All RTGH models |
| SP20787 | 2" Condensation Collar | RTGH-2, RTGH-3, and RTGH-S(R) models |
| AS43845-1 | PVC 90 elbow with wind vane and vent screen | RTGH-S(R)-Series |

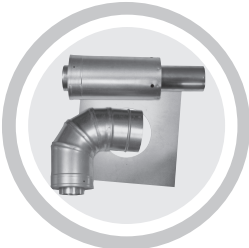
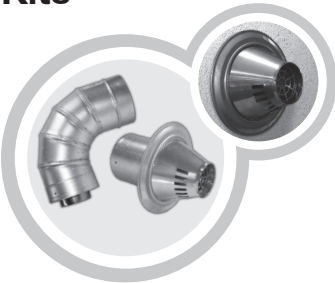


Tankless Venting

NON-CONDENSING VENTING

Termination Kits

3"/5" Stainless Steel Concentric Vent Termination Kits



RTG20210-1

| METAL FAB PART NUMBER | DESCRIPTION | COMPATIBLE WITH |
|-----------------------|--|-------------------|
| | Low-Profile Horizontal Vent Termination Kit – Contains: 90-Degree Elbow, Low-Profile Cone Termination, Trim Ring, Screws. All kits can be extended | All RTG-DV models |
| RTG20231-2 | For 2" x 4" Wall with 1-1/2" Siding For up to 6" Walls | |
| RTG20234-2 | For 2" x 6" Wall with 1-1/2" Siding For up to 8" Walls | |
| RTG20257 | For up to 10" Walls | |
| RTG20258 | For up to 12" Walls | |
| RTG20210-1 | Horizontal Vent Termination Kit – Contains: 94-Degree Elbow, Long Termination, 12" Wall Plate, Screws. For up to 10" walls. Can be extended | |
| RTG20211 | Vertical Vent Termination Kit – Contains: Storm Collar, 6/12 to 12/12 Pitched Cone Flashing, Vertical Termination with Rain Cap. Does not include vertical vent pipe | |



RTG20211



RTG20231-2



RTG20234-2



RTG20257



RTG20258

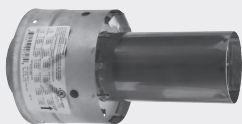
Termination Accessories

3"/5" Stainless Steel Concentric Vent Termination Accessories



RTG20151P

| METAL FAB PART NUMBER | DESCRIPTION | COMPATIBLE WITH |
|-----------------------|--|-------------------|
| | Low-Profile Horizontal Cone Terminations Contains: Low-Profile Cone Termination and Trim Ring only | All RTG-DV models |
| RTG20230-1 | For up to 4" Walls | |
| RTG20233-1 | For up to 6" Walls | |
| RTG20259 | For up to 8" Walls | |
| RTG20260 | For up to 10" Walls | |
| RTG20151P | Vertical Cap Termination – 12" overall height | |
| RTG20128-2 | Horizontal Termination– Short, for 4" horizontal wall only | |



RTG20128-2



RTG20259



RTG20233-1



RTG20230-1

Tankless Venting

NON-CONDENSING VENTING

Other Venting Accessories

3"/5" Value Stainless Steel Concentric Vent Termination Accessories

| METAL FAB PART NUMBER | DESCRIPTION | COMPATIBLE WITH |
|-----------------------|---|-------------------|
| RTG20151W | 6" Vent Length – 5.66" overall length | All RTG-DV models |
| RTG20151R | 12" Vent Length – 11.66" overall length | |
| RTG20151C-1 | 24" Vent Length – 23.66" overall length | |
| RTG20151D-1 | 36" Vent Length – 35.66" overall length | |
| RTG20151E-1 | Adjustable Vent Length – 7.5" to 22" overall length | |
| RTG20151Y | Adjustable Vent Length – 13" to 20" overall length | |
| RTG20151A-1 | 90-Degree Elbow – 8.1" rise - 8.1" run | |
| RTG20151B-1 | 45-Degree Elbow – 8.6" rise - 3" run | |



RTG20151W



RTG20151R



RTG20151C-1



RTG20151D-1



RTG20151E-1



RTG20151A-1



RTG20151B-1

Tankless Venting

NON-CONDENSING VENTING

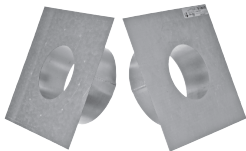
Other Venting Accessories

3"/5" Stainless Steel Concentric Vent Termination Kits

| METAL FAB PART NUMBER | DESCRIPTION | COMPATIBLE WITH |
|-----------------------|--|-------------------|
| RTG20151Z | Stucco Wall Thimble – 17" Wide - 12" Tall. Up to 6" deep wall with Drywall and Stucco Rings | All RTG-DV models |
| RTG20151X | Wall Thimble – 12" Square, up to 8" deep wall | |
| RTG20151H | Wall Hanger – 2-point pivot mounting | |
| RTG20151G | Wall Support – 3-point mounting | |
| RTG20151M-1 | Storm Collar – Split ring galvanized | |
| RTG20151L-1 | 6/12 to 12/12 Roof Flashing – 15" square base galvanized | |
| RTG20151K-1 | 2/12 to 5/12 Roof Flashing – 15" square base galvanized | |
| RTG20151J-1 | Tall Cone Roof Flashing – 15" square base galvanized | |
| RTG20151T | Support Plate – 17" square base support/fire stop | |



RTG20151Z



RTG20151X



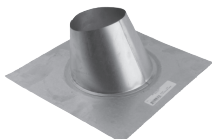
RTG20151H



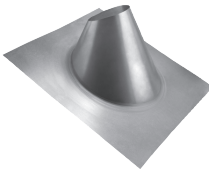
RTG20151G



RTG20151M-1



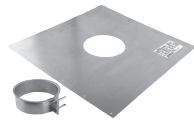
RTG20151K-1



RTG20151L-1



RTG20151J-1



RTG20151T

| METAL FAB PART NUMBER | DESCRIPTION | COMPATIBLE WITH |
|-----------------------|--|-----------------------|
| RTG20144-3 | Appliance Adapter – 5" overall length | RTG-66 or 53DV models |
| RTG20151S | Condensate Drain – Horizontal and vertical 8.6" overall length | All RTG-DV models |
| RTG20150A | Silicone Condensate Drain Tube Kit – 6' high temp tube, 2 clamps, 2 wire ties, instructions | |
| RTG20151AA | Trim Ring. Indoor/Outdoor – 8.9" dia - 5.25" hole, galvanized | |



RTG20144-3



RTG20151S



RTG20150A



RTG20151AA

Commercial Common Venting

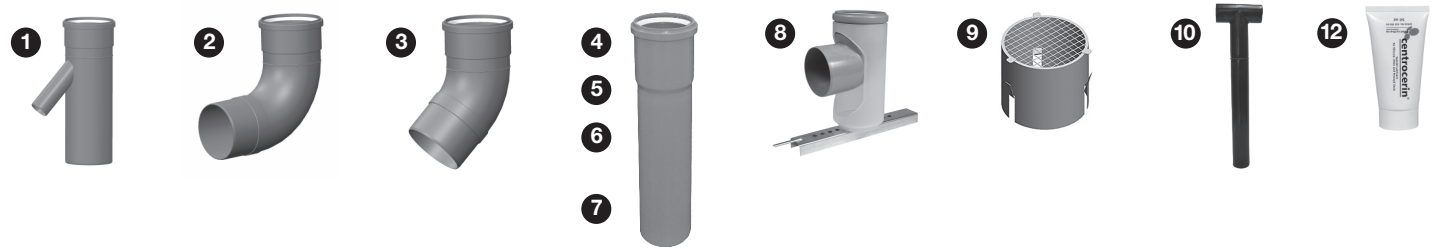
COMMERCIAL TANKLESS COMMON VENTING

For use with RTGH-C models

Rheem offers a manufacturer tested and UL/ULC listed common venting system providing longer lengths and fewer wall penetrations than single-unit venting. The system is polypropylene stabilized (PPs) material and Intertek certified for UL -1738 and ULC-S636 and manufactured by CentroTherm EcoSystems in the USA. Venting pieces are self-locking and sealing and can be pushed together without the use of cement or glue.

NOTE: Standard Lead Time for these items is 7-10 days (Ships from Albany, NY)

Vent Run Accessories



| IMAGE NUMBER | PART DESCRIPTION | 6" | 8" | 10" |
|--------------|----------------------------------|-----------|-----------|-----------|
| 1 | Air Intake Branch Tee | SP20918AD | SP20918L | SP20918AE |
| 2 | 87 Degree Elbow | SP20918BE | SP20918M | SP20918BM |
| 3 | 45 Degree Elbow | SP20918BF | SP20918N | SP20918BN |
| 4 | Straight Pipe, 1' | SP20918BG | SP20918P | SP20918BP |
| 5 | Straight Pipe, 2' | SP20918BH | SP20918R | SP20918BR |
| 6 | Straight Pipe, 3' | SP20918BJ | SP20918S | SP20918BS |
| 7 | Straight Pipe, 6' | SP20918BK | SP20918T | SP20918BT |
| 8 | 90 Degree Elbow Vertical Support | SP20918BL | SP20918U | SP20918BU |
| 9 | Bird Screen SS | SP20918AY | SP20918V | SP20918AZ |
| 10 | Tee Termination | SP20918BA | SP20918W | SP20918BB |
| 11 | Support Clamp | SP20918AW | SP20918AA | SP20918AX |
| 12 | Centrocerin Lubricant | SP20918H | SP20918H | SP20918H |

| | CENTROTHERM PPS | PVC | CPVC |
|--|------------------------------|------------------------------|------------------------------|
| Chemical Resistance | | | |
| – Aromatic Hydrocarbons | ✓ | X | X |
| – Sulfuric Acid | ✓ | X | X |
| – Hydrochloric Acid | ✓ | X | X |
| UL Listed (0°F to 230°F) | Listed | Not Listed | Not Listed |
| Actual Working Temperature | 32°F (0°C) 248°F (120°C) | 50°F (15°C) 149°F (65°C) | 50°F (15°C) 194°F (90°C) |
| Softening Temperatures | 302°F (150°C) | 176°F (80°C) | 200°F (93°C) |
| Environmentally Friendly Production | ✓ | X | X |
| No Chloride Leaching | ✓ | X | X |
| Fully Recyclable | ✓ | X | X |

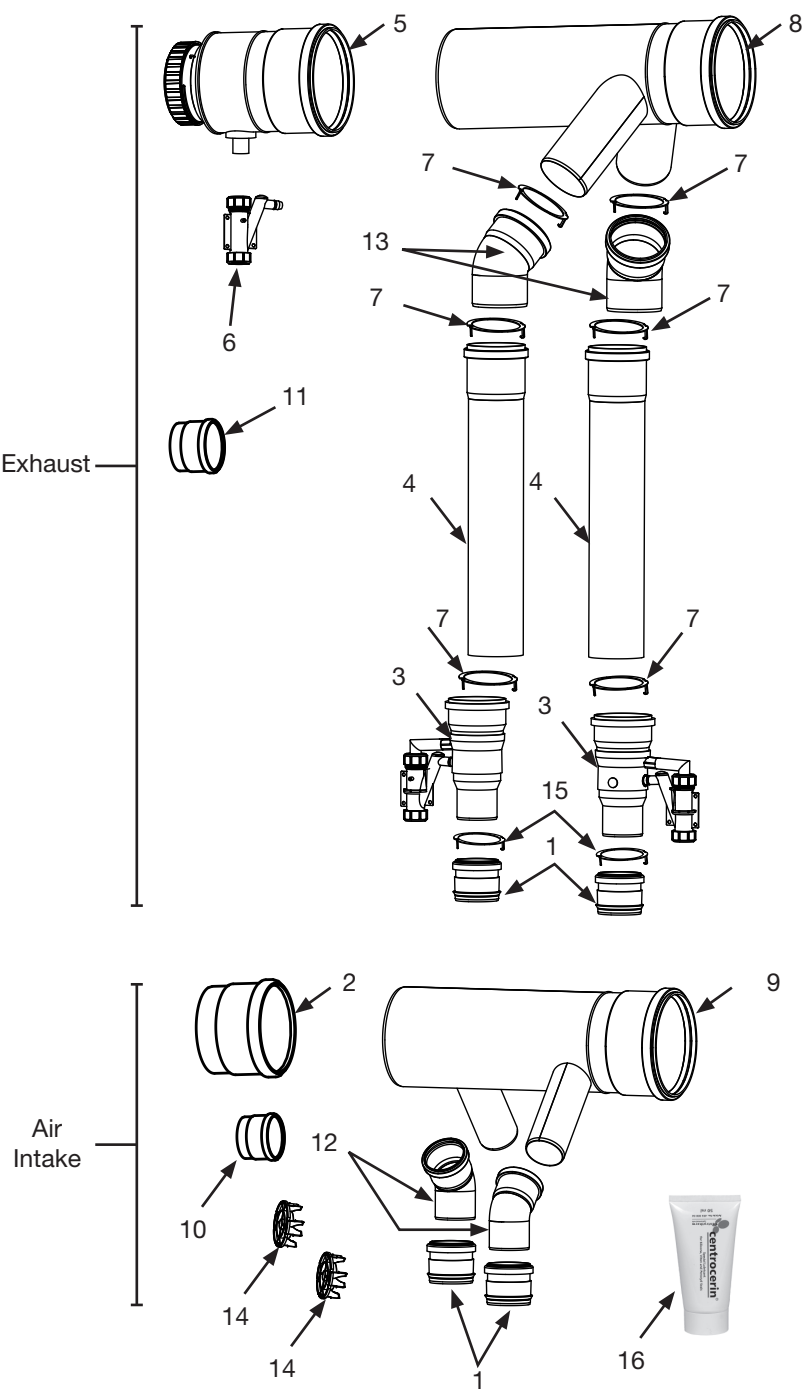
Specifications

The Common Vent System shall be manufactured from polypropylene stabilized (PPs). The Common Vent System shall be UL-1738 & ULC-S636 rated for use with maximum flue gas temperatures of 230°F (110°C), and be rated to a maximum vent pressure of 20" of water column.

NOTE: Temperature values in table represent exhaust flue temperatures. For approximate max. water set point temperatures, subtract 20 degrees F.

Back to Back Common Venting

Back to Back Common Vent Kit Components



Parts 2, 9 & 10 in Direct Vent Header Kits only

| RHEEM PART NUMBER | | PART DESCRIPTION |
|-------------------|-----------|--|
| 1 | SP20918A | 3" PVC to PP Adaptor |
| 2 | SP20918AH | 6" Tee Cap |
| | SP20918K | 8" Tee Cap |
| | SP20918AK | 10" Tee Cap |
| 3 | SP20918D | Non-Return Valve (NRV) |
| 4 | SP20918G | 4" Straight Pipe, 2' |
| 5 | SP20918AG | 6" Horizontal Drain Fitting |
| | SP20918F | 8" Horizontal Drain Fitting |
| | SP20918AJ | 10" Horizontal Drain Fitting |
| 6 | SP20918C | Universal Ball Valve Siphon |
| 7 | SP20918Y | 4" Connector Ring |
| 8 | SP20918AM | 6" Back to Back Exhaust Branch Tee |
| | SP20918AP | 8" Back to Back Exhaust Branch Tee |
| | SP20918AS | 10" Back to Back Exhaust Branch Tee |
| 9 | SP20918AN | 6" Back to Back Air Intake Branch Tee |
| | SP20918AR | 8" Back to Back Air Intake Branch Tee |
| | SP20918AT | 10" Back to Back Air Intake Branch Tee |
| 10 | SP20918AU | 3" Tee Cap |
| 11 | SP20918AV | 4" Tee Cap |
| 12 | SP20918BC | 3", 45 Degree Elbow |
| 13 | SP20918BD | 4", 45 Degree Elbow |
| 14 | SP20918AB | 3" Bird Screen |
| 15 | SP20918X | 3" Connector Ring |
| 16 | SP20918H | Centrocerin Lubricant |

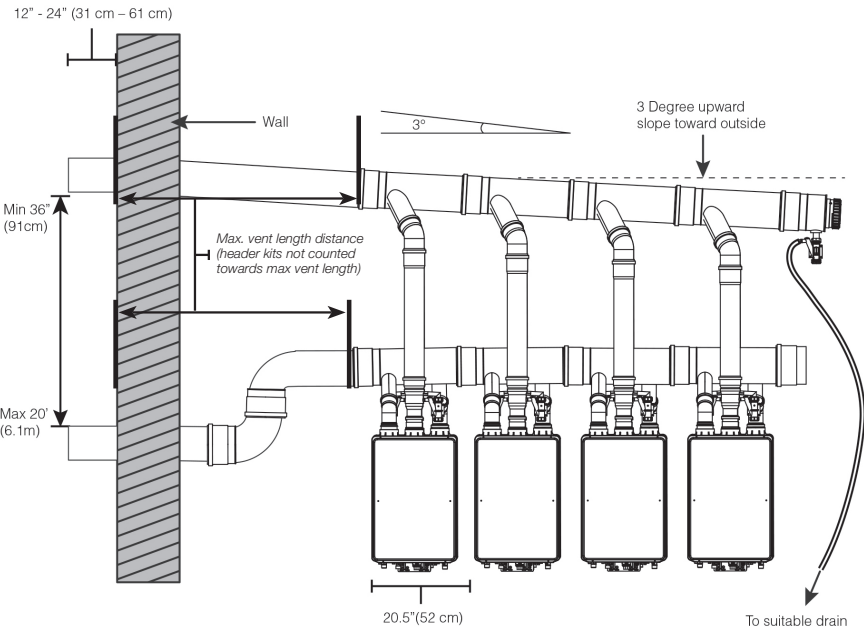
NOTE: All header kit parts available individually for replacement order using part numbers above.
NOTE: Exhaust branches are 4", intake branches are 3" diameter.

Back to Back Common Venting

The following back to back header vent kits can be purchased separately to create **Back to Back Common Venting** system:

NOTE: Back to Back venting requires additional gas chip, sold separately.
Consult Rheem Applications Engineer before purchase.

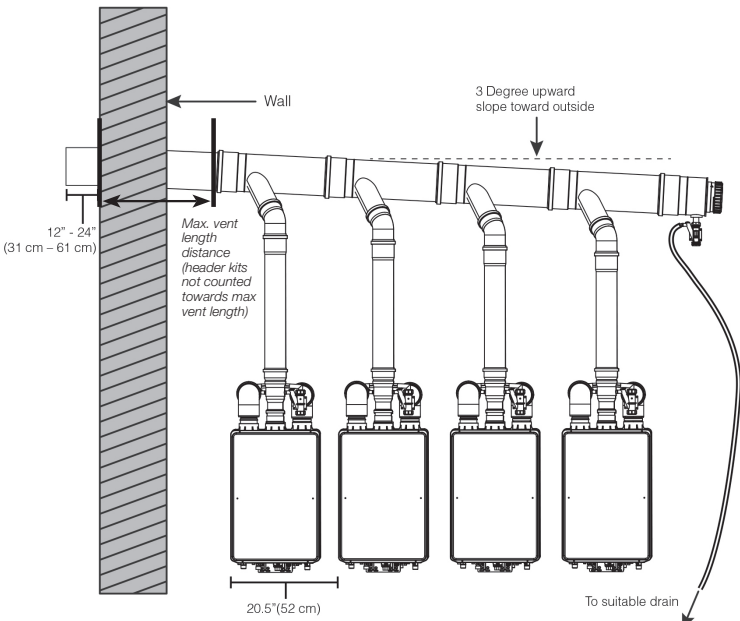
Direct Vent Header Kits



Diagrams illustrate horizontal intake and exhaust, vertical intake and exhaust also available, but not pictured.

| RHEEM PART NUMBER | TRUNK DIAMETER | NUMBER OF UNITS |
|-------------------|----------------|-----------------|
| SP20912A | 6" | 2 |
| SP20912B | | 3 |
| SP20912C | | 4 |
| SP20914A | 8" | 2 |
| SP20914B | | 3 |
| SP20914C | | 4 |
| SP20914D | | 5 |
| SP20914E | | 6 |
| SP20914F | | 7 |
| SP20914G | | 8 |
| SP20916A | 10" | 2 |
| SP20916B | | 3 |
| SP20916C | | 4 |
| SP20916D | | 5 |
| SP20916E | | 6 |
| SP20916F | | 7 |
| SP20916G | | 8 |

Room Air Intake Header Kits

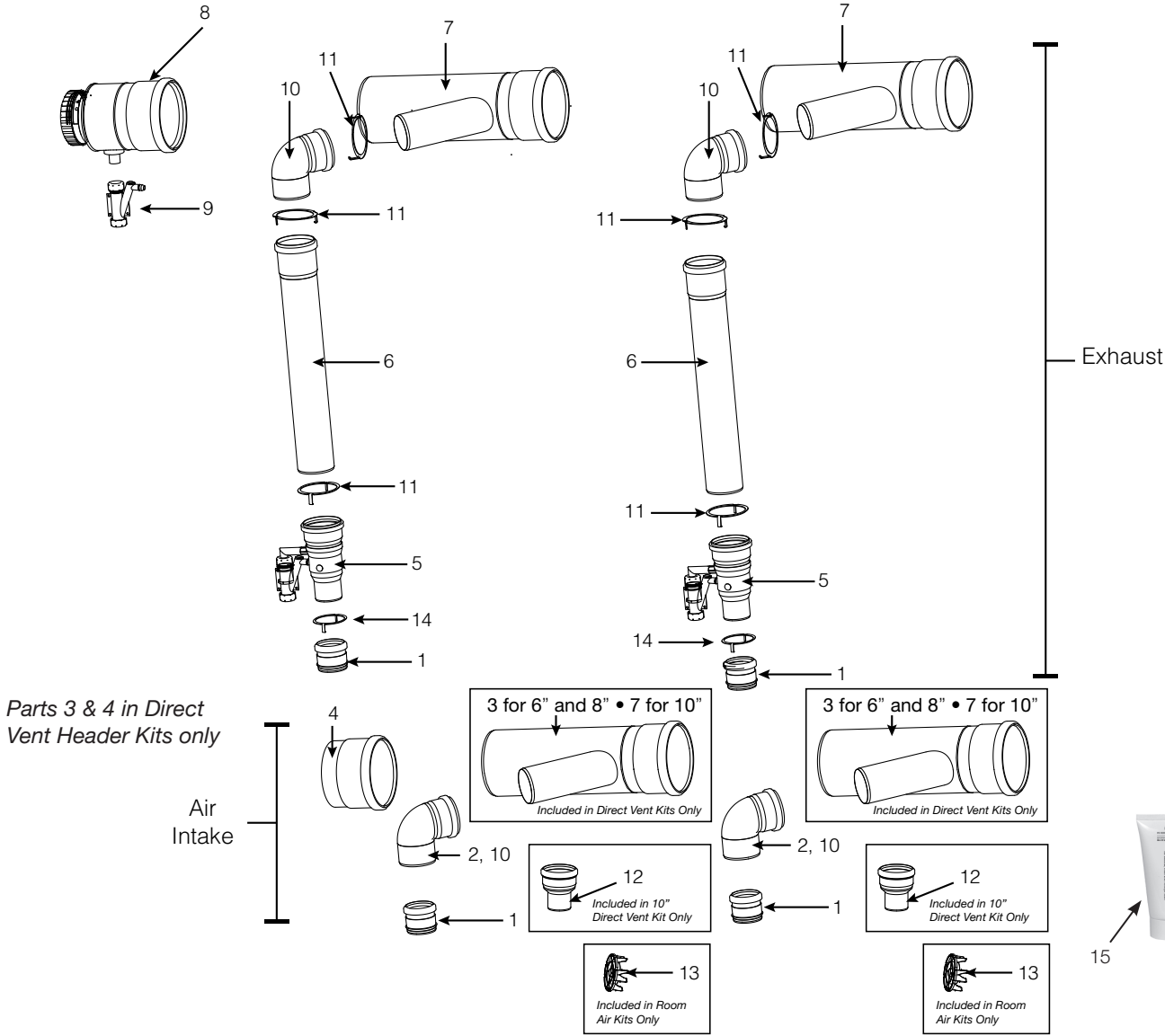


| RHEEM PART NUMBER | TRUNK DIAMETER | NUMBER OF UNITS |
|-------------------|----------------|-----------------|
| SP20913A | 6" | 2 |
| SP20913B | | 3 |
| SP20913C | | 4 |
| SP20915A | 8" | 2 |
| SP20915B | | 3 |
| SP20915C | | 4 |
| SP20915D | | 5 |
| SP20915E | | 6 |
| SP20915F | | 7 |
| SP20915G | | 8 |
| SP20917A | 10" | 2 |
| SP20917B | | 3 |
| SP20917C | | 4 |
| SP20917D | | 5 |
| SP20917E | | 6 |
| SP20917F | | 7 |
| SP20917G | | 8 |

These kits contain only minimum required vent parts to create a common venting trunk line and a connection from the trunk line to water heaters. Vent parts included in these kits **DO NOT** count for equivalent vent length except a 87 degree elbow for the air intake included in a room air kit. Additional vent parts will be required to complete the common venting system. Refer to "Parts List" of this installation instructions for additional information.

Inline Common Venting

Inline Common Vent Kit Components



| RHEEM PART NUMBER | | PART DESCRIPTION |
|-------------------|-----------|------------------------------------|
| 1 | SP20918A | 3" PVC to PP Adaptor |
| 2 | SP20918J | 3", 87° Elbow |
| 3 | SP20918AD | 6" Air Intake Branch Tee |
| | SP20918L | 8" Air Intake Branch Tee |
| 4 | SP20918AH | 6" Tee Cap |
| | SP20918K | 8" Tee Cap |
| | SP20918AK | 10" Tee Cap |
| 5 | SP20918D | Non-Return Valve (NRV) |
| 6 | SP20918G | 4" Straight Pipe, 2' (Direct Vent) |
| | SP20918Z | 4" Straight Pipe, 1' (Room Air) |

NOTE: All header kit parts available individually for replacement order using part numbers above.

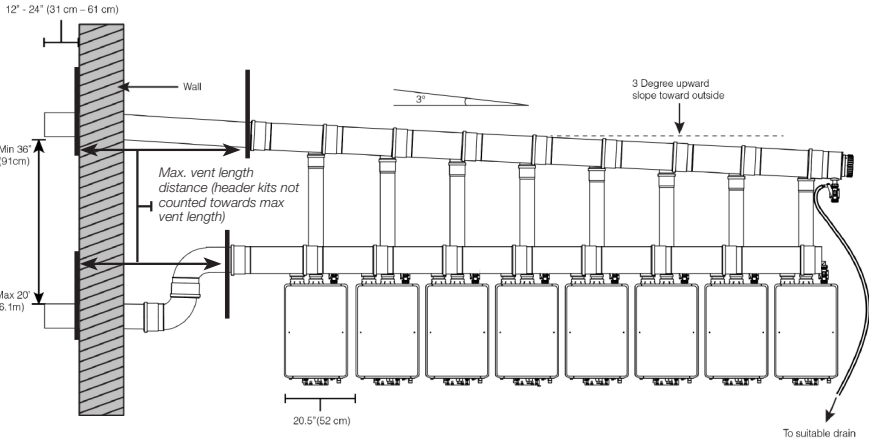
NOTE: For 6" and 8" trunk diameters, exhaust branches are 4", intake branches are 3" diameter, for 10" diameter trunk, both exhaust and intake branches are 3" diameter.

| RHEEM PART NUMBER | | PART DESCRIPTION |
|-------------------|-----------|---------------------------------------|
| 7 | SP20918AC | 6" Exhaust Branch Tee |
| | SP20918E | 8" Exhaust Branch Tee |
| | SP20918AE | 10" Exhaust and Air Intake Branch Tee |
| 8 | SP20918AG | 6" Horizontal Drain Fitting |
| | SP20918F | 8" Horizontal Drain Fitting |
| | SP20918AJ | 10" Horizontal Drain Fitting |
| 9 | SP20918C | Universal Ball Valve Siphon |
| 10 | SP20918B | 4", 87 Degree Elbow |
| 11 | SP20918Y | 4" Connector Ring |
| 12 | SP20918AL | 3" to 4" Increaser |
| 13 | SP20918AB | 3" Bird Screen |
| 14 | SP20918X | 3" Connector Ring |
| 15 | SP20918H | Centrocerin Lubricant |

Inline Common Venting

The following inline header vent kits can be purchased separately to create **Inline Common Venting** system:

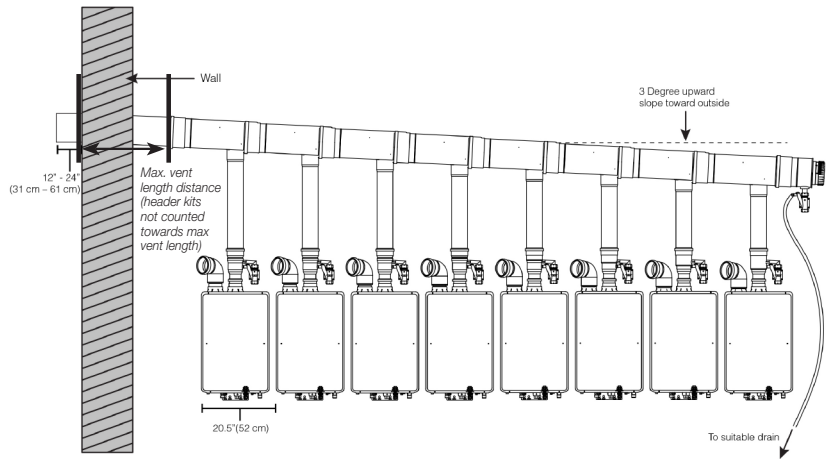
Direct Vent Header Kits



Diagrams illustrate horizontal intake and exhaust, vertical intake and exhaust also available, but not pictured.

| RHEEM PART NUMBER | TRUNK DIAMETER | NUMBER OF UNITS |
|-------------------|----------------|-----------------|
| SP20906A | 6" | 2 |
| SP20906B | | 3 |
| SP20906C | | 4 |
| SP20908A | 8" | 2 |
| SP20908B | | 3 |
| SP20908C | | 4 |
| SP20908D | | 5 |
| SP20908E | | 6 |
| SP20908F | | 7 |
| SP20908G | | 8 |
| SP20910A | 10" | 2 |
| SP20910B | | 3 |
| SP20910C | | 4 |
| SP20910D | | 5 |
| SP20910E | | 6 |
| SP20910F | | 7 |
| SP20910G | | 8 |
| SP20910H | | 9 |
| SP20910J | | 10 |

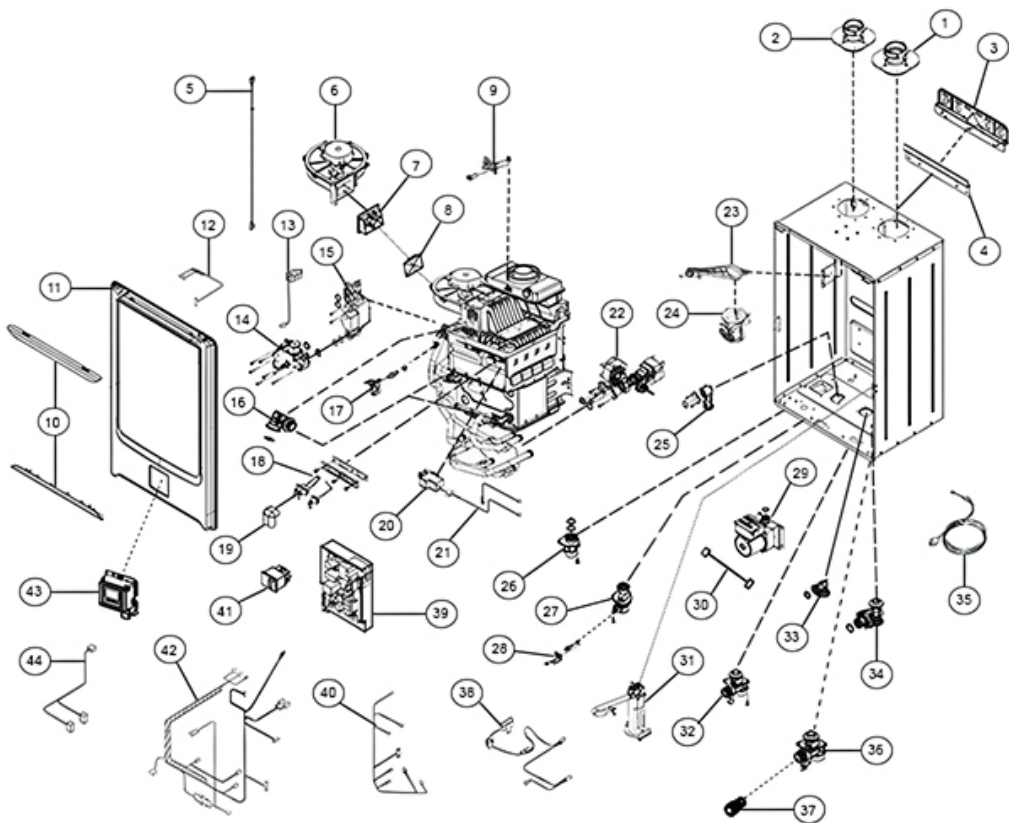
Room Air Intake Header Kits



These kits contain only minimum required vent parts to create a common venting trunk line and a connection from the trunk line to water heaters. Vent parts included in these kits **DO NOT** count for equivalent vent length except a 87 degree elbow for the air intake included in a room air kit. Additional vent parts will be required to complete the common venting system. Refer to “Parts List” of this installation instructions for additional information.

| RHEEM PART NUMBER | TRUNK DIAMETER | NUMBER OF UNITS |
|-------------------|----------------|-----------------|
| SP20907A | 6" | 2 |
| SP20907B | | 3 |
| SP20907C | | 4 |
| SP20909A | 8" | 2 |
| SP20909B | | 3 |
| SP20909C | | 4 |
| SP20909D | | 5 |
| SP20909E | | 6 |
| SP20909F | | 7 |
| SP20909G | | 8 |
| SP20911A | 10" | 2 |
| SP20911B | | 3 |
| SP20911C | | 4 |
| SP20911D | | 5 |
| SP20911E | | 6 |
| SP20911F | | 7 |
| SP20911G | | 8 |
| SP20911H | | 9 |
| SP20911J | | 10 |

Parts for RTGH-S, RTGH-SR Series



OUTDOOR CONVERSION KIT



| MODEL NUMBER | DESCRIPTION | COMPATIBLE WITH |
|--------------|--|----------------------|
| RTGH-SX* | Converts RTGH-S(R) indoor models for outdoor installation. | ALL RTGH-S(R) MODELS |

*This part is fulfilled through Rheem Water Heating Division. Not stocked at RPD.

Fuel Conversion Kits – Without Recirculation

| Fuel Type | RTGH-S11i | RTGH-S10i | RTGH-S84i |
|----------------|-----------|-----------|-----------|
| U.S. Propane | RTG20242A | RTG20242B | RTG20242C |
| Canada Propane | RTG20242G | RTG20242H | RTG20242J |

Fuel Conversion Kits – With Recirculation

| Fuel Type | RTGH-SR11i | RTGH-SR10i | RTGH-SR84i |
|----------------|------------|------------|------------|
| U.S. Propane | RTG20242D | RTG20242E | RTG20242F |
| Canada Propane | RTG20242K | RTG20242L | RTG20242M |

Programming Chips – Without Recirculation

| Fuel Type | RTGH-S11i | RTGH-S10i | RTGH-S84i |
|-----------|------------|------------|------------|
| Natural | RTG20319AV | RTG20319AZ | RTG20319AX |
| Propane | RTG20319AW | RTG20319BA | RTG20319AY |

Programming Chips – With Recirculation

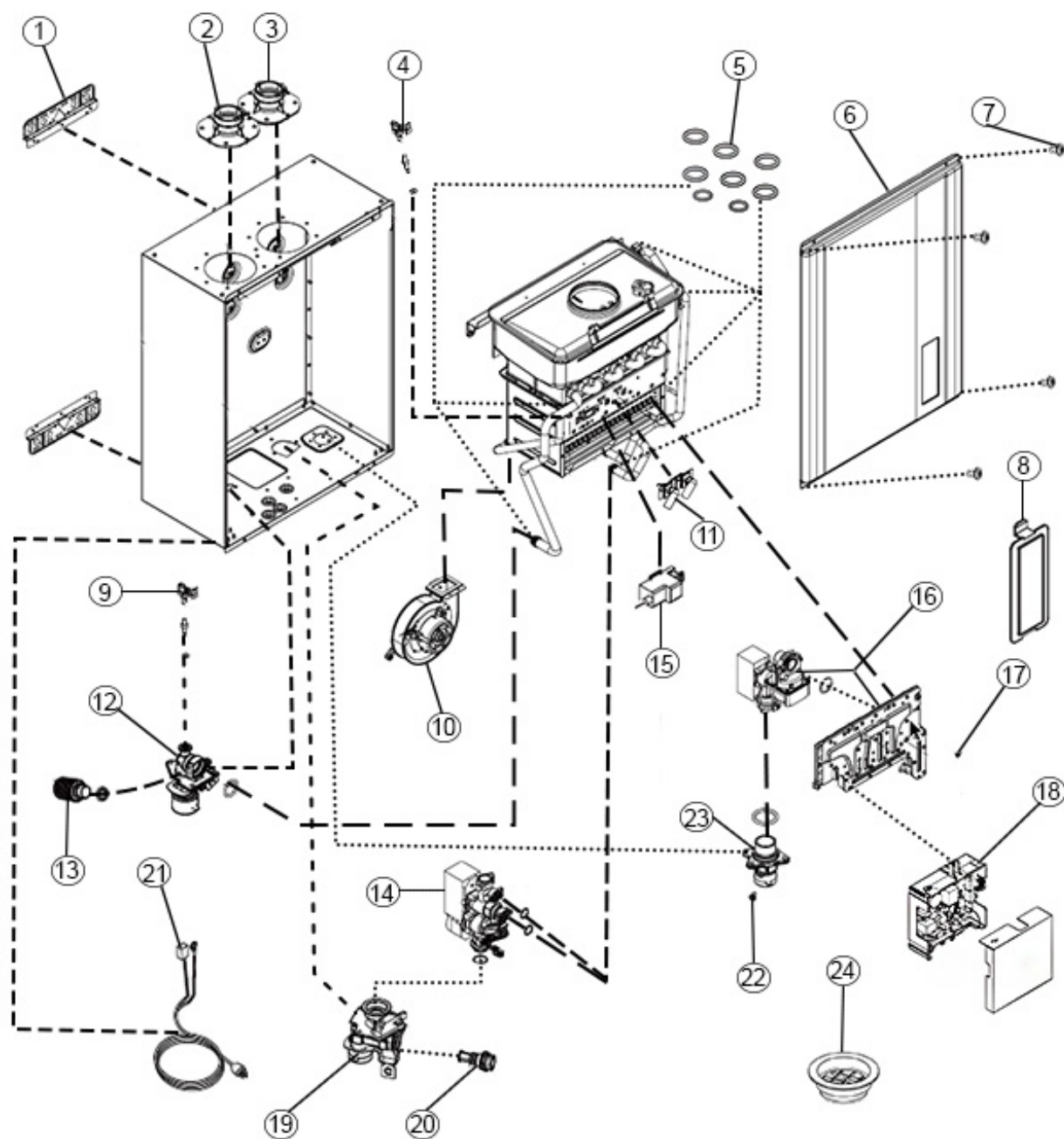
| Fuel Type | RTGH-SR11i | RTGH-SR10i | RTGH-SR84i |
|-----------|------------|------------|------------|
| Natural | RTG20319BB | RTG20319BF | RTG20319BD |
| Propane | RTG20319BC | RTG20319BG | RTG20319BE |

Parts for RTGH-S, RTGH-SR Series

| Ref # | Rheem Part # | Description | RTGH-S | RTGH-SR |
|-------|--------------|---|--------|---------|
| 1 | RTG20319CP | Vent Connection Assembly | • | • |
| 2 | RTG20319CV | Air Inlet Connector Assembly | • | • |
| 3 | RTG20319CC | Hanging Bracket | • | • |
| 4 | RTG20319CD | Wall Mounting Bracket | • | • |
| 5 | RTG20319AB | Fan Control Wiring Harness | • | • |
| 6 | RTG20319T | Blower Assembly | • | • |
| 7 | RTG20319CL | Check Valve - Fan | • | • |
| 8 | RTG20319CM | Flapper - Check Valve | • | • |
| 9 | RTG20319P | Exhaust Thermistor Kit (w/ O-Ring and Screw) | • | • |
| 10 | RTG20319B | Plastic Screw Cover | • | • |
| 11 | RTG20319A | Front Cover Kit (w/ 4 Screws & 1 Washer) | • | • |
| 12 | RTG20319AA | Gas Control Wiring Harness | • | • |
| 13 | RTG20319AF | Solenoid Valve Resistor | • | • |
| 14 | RTG20319AJ | Gas Orifice Block Assembly - NG - Kit (w/ 7 Screws & 2 Gaskets) | • | • |
| 14 | RTG20319BZ | Gas Orifice Block Assembly Kit - LP (w/ 7 Screws & 2 Gaskets) | • | • |
| 15 | RTG20319C | Gas Valve Kit (w/ 4 O-Rings & 2 Screws) | • | • |
| 16 | RTG20319CZ | Connection Assembly C, O-Ring Kit | • | • |
| 17 | RTG20319DE | Thermistor - HEX, O-Ring - Kit (w/ Thermister, Clip and O-Ring) | • | • |
| 18 | RTG20319BY | Flame Rod and Igniter Rod Kit | • | • |
| 19 | RTG20319DK | Cover - Igniter | • | • |
| 20 | RTG20319S | Igniter Coil Kit (w/ Screw) | • | • |
| 21 | RTG20319AC | High Voltage Wiring (Igniter Coil) | • | • |
| 22 | RTG20319K | Water Volume Control Valve Kit (w/ 2 Gaskets, 4 Screws, 2 Brackets) | • | • |
| 23 | RTG20319AL | Air Filter Kit (w/ Screw) | • | • |
| 24 | RTG20319AK | Ventri Assembly Kit (w/ Gasket & 3 Screw) | • | • |
| 25 | RTG20319H | Elbow Connection C Kit (w/ O-Ring, 2 Screws & Bracket) | • | • |
| 26 | RTG20319G | Gas Inlet Connector Kit (w/ 2 O-Rings & 3 Screw) | • | • |
| 27 | RTG20319F | Water Outlet Connection Kit (w/ 4 Screws) | • | • |
| 28 | RTG20319R | Outlet Thermistor Kit (w/ O-Ring, Bracket and Screw) | • | • |
| 29 | RTG20319AM | Recirc. Pump Kit (w/ Gasket) | | • |
| 30 | RTG20319AU | Pump Wiring Harness | | • |
| 31 | RTG20319N | Condensate Drain Trap Replacement Kit | • | • |
| 32 | RTG20319CA | Recirc. Water Inlet Connection Kit (w/ Screw) | | • |
| 33 | RTG20319AT | Pump Connection Kit (w/ Gasket) | | • |
| 34 | RTG20319AS | Check Valve Kit (w/ O-Ring) | | • |
| 35 | RTG20319X | Power Cord Assembly | • | • |
| 36 | RTG20319M | Water Inlet Connection Kit (w/ 3 Screws) | • | • |
| 37 | RTG20164AK | Inlet Water Filter | • | • |
| 38 | RTG20319DN | Freeze Protection Heater | • | • |
| 39 | RTG20319W | Control Board Kit (w/ 2 Screws) | • | • |
| 40 | RTG20319Y | Thermistor Wiring Harness | • | • |
| 41 | RTG20319DJ | Switch - Power On/OFF | • | • |
| 42 | RTG20319AD | Power Control Wiring Harness | • | • |
| 43 | AP20298 | Display Assembly - WiFi | • | • |
| 44 | RTG20319AE | Display Control Wiring Harness | • | • |

See Pages 6 - 14 for Accessories, Manifold Systems, and Venting Options.

Parts for RTGH-DVL3 Series



OUTDOOR CONVERSION KIT



| MODEL NUMBER | DESCRIPTION | COMPATIBLE WITH |
|--------------|--|----------------------|
| RTGH-X | Converts RTGH-DVL3 indoor models for outdoor installation. | ALL RTGH-DVL3 MODELS |

Programming Chips

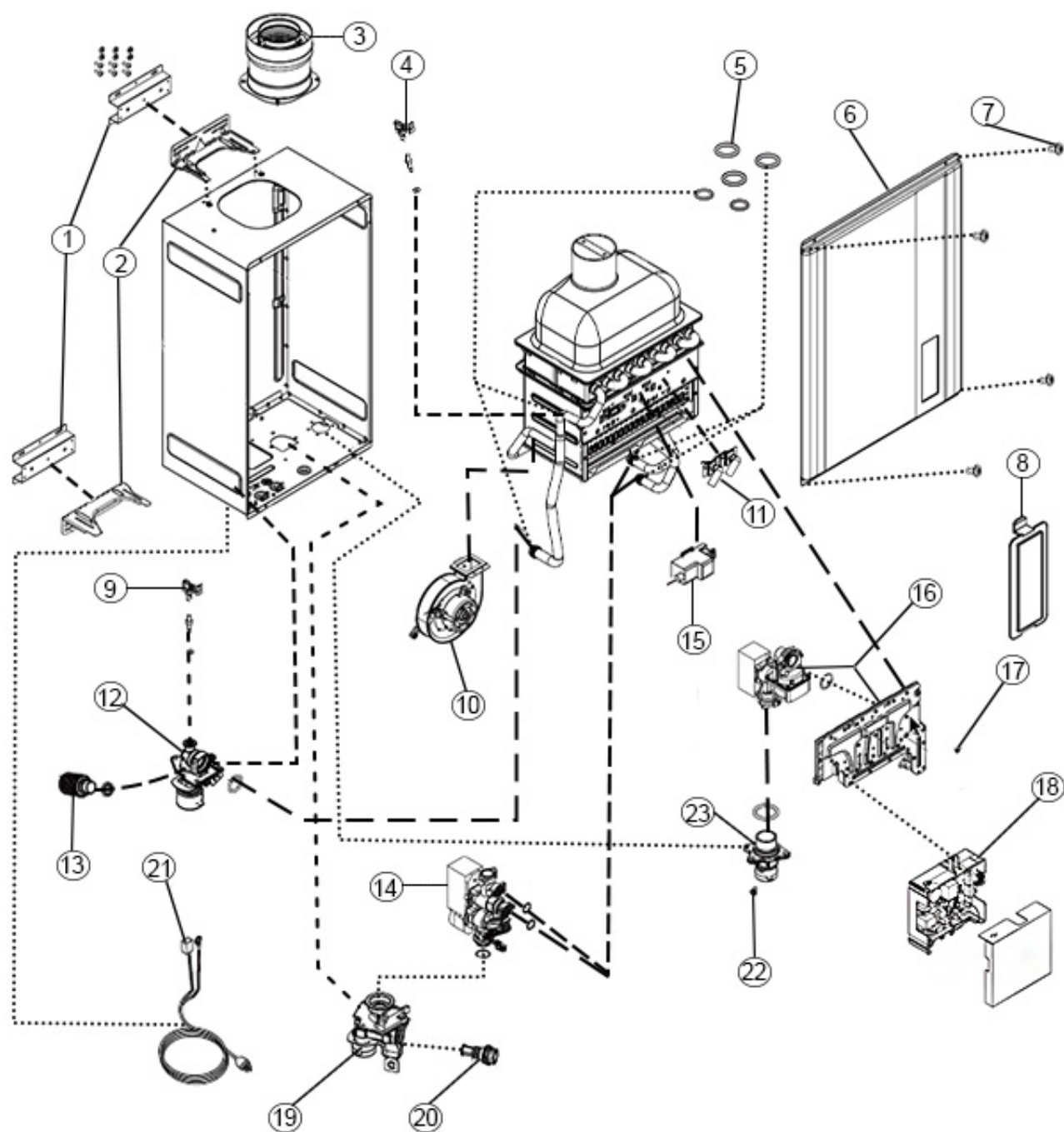
| Fuel Type | RTGH-95DV(E)LN/P-3 | RTGH-90DVLN/P-3 | RTGH-84DVLN/P-3 | RTGH-68DVLN/P-3 |
|-----------|--------------------|-----------------|-----------------|-----------------|
| Natural | RTG20329Q | RTG20329S | RTG20329U | RTG20329W |
| Propane | RTG20329R | RTG20329T | RTG20329V | RTG20329X |

Parts for RTGH-DVL3 Series

| Ref # | Rheem Part # | Description | RTGH-68DVL-3 | RTGH-84DVL-3 | RTGH-90DVL-3 | RTGH-95DVL-3 | RTGH-95DVEL-3 |
|-------|--------------|---|--------------|--------------|--------------|--------------|---------------|
| 1 | RTG20329B | Bracket | • | • | • | • | • |
| 2 | RTG20319CV | Air Inlet Connector Assembly | • | • | • | • | • |
| 3 | RTG20319CP | Vent Connection Assembly | • | • | • | • | • |
| 4 | RTG20329L | Outlet HEX Thermistor with O-Ring | • | • | • | • | • |
| 5 | RTG20329AE | O-Ring Kit | • | • | • | • | • |
| 6 | RTG20329A | Front Cover Final Assembly | • | • | • | • | • |
| 7 | RTG20329AB | Front Cover Screws | • | • | • | • | • |
| 8 | RTG20329AF | Non Wi-Fi Display | • | • | • | • | |
| 8 | RTG20329AG | Wi-Fi Display | | | | | • |
| 9 | RTG20329M | Hot Water Thermistor with O-Ring | • | • | • | • | • |
| 10 | RTG20329N | Blower Motor Assembly | • | • | • | • | • |
| 11 | RTG20329F | Igniter & Flame Rod Kit | • | • | • | • | • |
| 12 | RTG20329K | Hot Water Connection Kit with O-Ring | • | • | • | • | • |
| 13 | RTG20329J | Drain Valve | • | • | • | • | • |
| 14 | RTG20329AV | Water Control Valve Kit with O-Ring | • | • | • | • | • |
| 15 | RTG20329AW | Ignitor Coil | • | • | • | • | • |
| 16 | RTG20329E | Manifold Assembly Kit with Gas Proportional Valve (for LP) | • | • | • | • | • |
| 16 | RTG20329D | Manifold Assembly Kit with Gas Proportional Valve (for NAT) | • | • | • | • | • |
| 17 | RTG20329Z | Screw with Gasket - for Manifold Pressure Port | • | • | • | • | • |
| 18 | RTG20329P | PCB Kit | • | • | • | • | • |
| 19 | RTG20329G | Inlet Water Connection Assembly | • | • | • | • | • |
| 20 | RTG20329H | Water Filter | • | • | • | • | • |
| 21 | RTG20329Y | Power Cord | • | • | • | • | • |
| 22 | RTG20329AA | Screw with Gasket - for Inlet Gas Pressure Port | • | • | • | • | • |
| 23 | RTG20329C | Gas Connection Final Assembly with O-Ring | • | • | • | • | • |
| | RTG20329AH | Wi-Fi Display hHrness | | | | | • |
| | RTG20329AL | Leak Sensor Kit | | | | | • |
| | RTG20329AK | Wi-Fi Display Mounting Assembly | | | | | • |

See Pages 6 - 14 for Accessories, Manifold Systems, and Venting Options.

Parts for RTG-DVL3 Series



Programming Chips

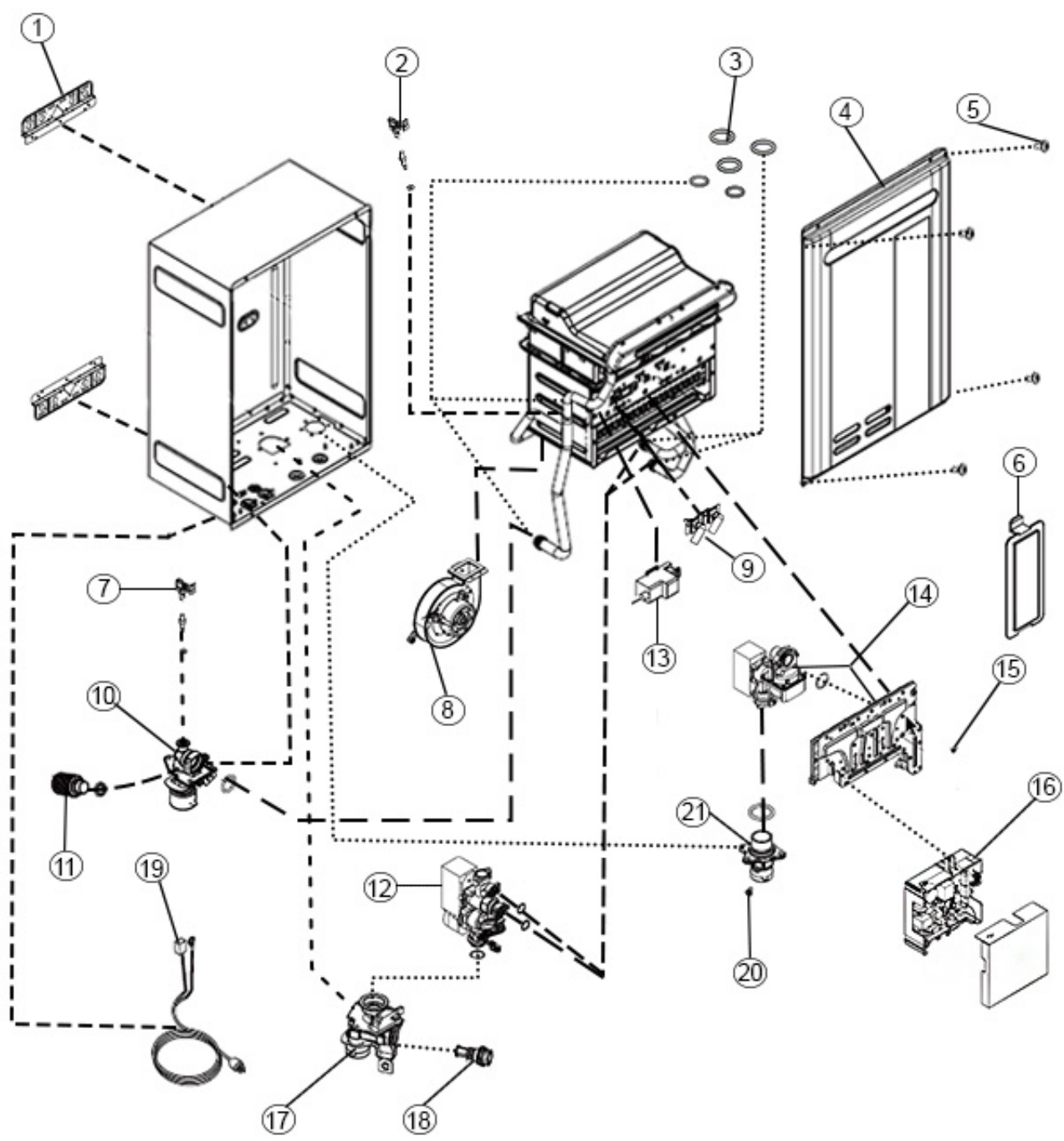
| Fuel Type | RTG-95DV(E)LN/P-3 | RTG-84DVLN/P-3 | RTG-70DVLN/P-3 |
|-----------|-------------------|----------------|----------------|
| Natural | RTG20330G | RTG20330AL | RTG20330K |
| Propane | RTG20330H | RTG20330J | RTG20330L |

Parts for RTG-DVL3 Series

| Ref # | Rheem Part # | Description | RTG-70DVL-3 | RTG-84DVL-3 | RTG-95DVL-3 | RTG-95DVEL-3 |
|-------|--------------|---|-------------|-------------|-------------|--------------|
| 1 | RTG20330C | Mounting Bracket Kit | • | • | • | • |
| 2 | RTG20330B | Mounting Bracket | • | • | • | • |
| 3 | RTG20330AL | Non-condensing Vent Connector | • | • | • | • |
| 4 | RTG20329L | Outlet HEX Thermistor with O-Ring | • | • | • | • |
| 5 | RTG20329AE | O-Ring Kit | • | • | • | • |
| 6 | RTG20330A | Front Cover Final Assembly | • | • | • | • |
| 7 | RTG20329AB | Front Cover Screws | • | • | • | • |
| 8 | RTG20329AF | Non Wi-Fi Display | • | • | • | |
| 8 | RTG20329AG | Wi-Fi Display | | | | • |
| 9 | RTG20329M | Hot Water Thermistor with O-Ring | • | • | • | • |
| 10 | RTG20330F | Blower Motor Assembly | • | • | • | • |
| 11 | RTG20329F | Igniter & Flame Rod Kit | • | • | • | • |
| 12 | RTG20329K | Hot Water Connection Kit with O-Ring | • | • | • | • |
| 13 | RTG20329J | Drain Valve | • | • | • | • |
| 14 | RTG20329AV | Water Control Valve Kit with O-ring | • | • | • | • |
| 15 | RTG20329AW | Ignitor Coil | • | • | • | • |
| 16 | RTG20329E | Manifold Assembly Kit with Gas Proportional Valve (for LP) | • | • | • | • |
| 16 | RTG20329D | Manifold Assembly Kit with Gas Proportional Valve (for NAT) | • | • | • | • |
| 17 | RTG20329Z | Screw with Gasket - for Manifold Pressure Port | • | • | • | • |
| 18 | RTG20329P | PCB Kit | • | • | • | • |
| 19 | RTG20329G | Inlet Water Connection Assembly | • | • | • | • |
| 20 | RTG20329H | Water Filter | • | • | • | • |
| 21 | RTG20329Y | Power Cord | • | • | • | • |
| 22 | RTG20329AA | Screw with Gasket - for Inlet Gas Pressure Port | • | • | • | • |
| 23 | RTG20329C | Gas Connection Final Assembly with O-Ring | • | • | • | • |
| 24 | AP21435 | Bird Screen | • | • | • | • |
| | RTG20329AH | Wi-Fi Display Harness | | | | • |
| | RTG20329AL | Leak Sensor Kit | | | | • |

See Pages 6 - 14 for Accessories, Manifold Systems, and Venting Options.

Parts for RTG-XL3 Series



Programming Chips

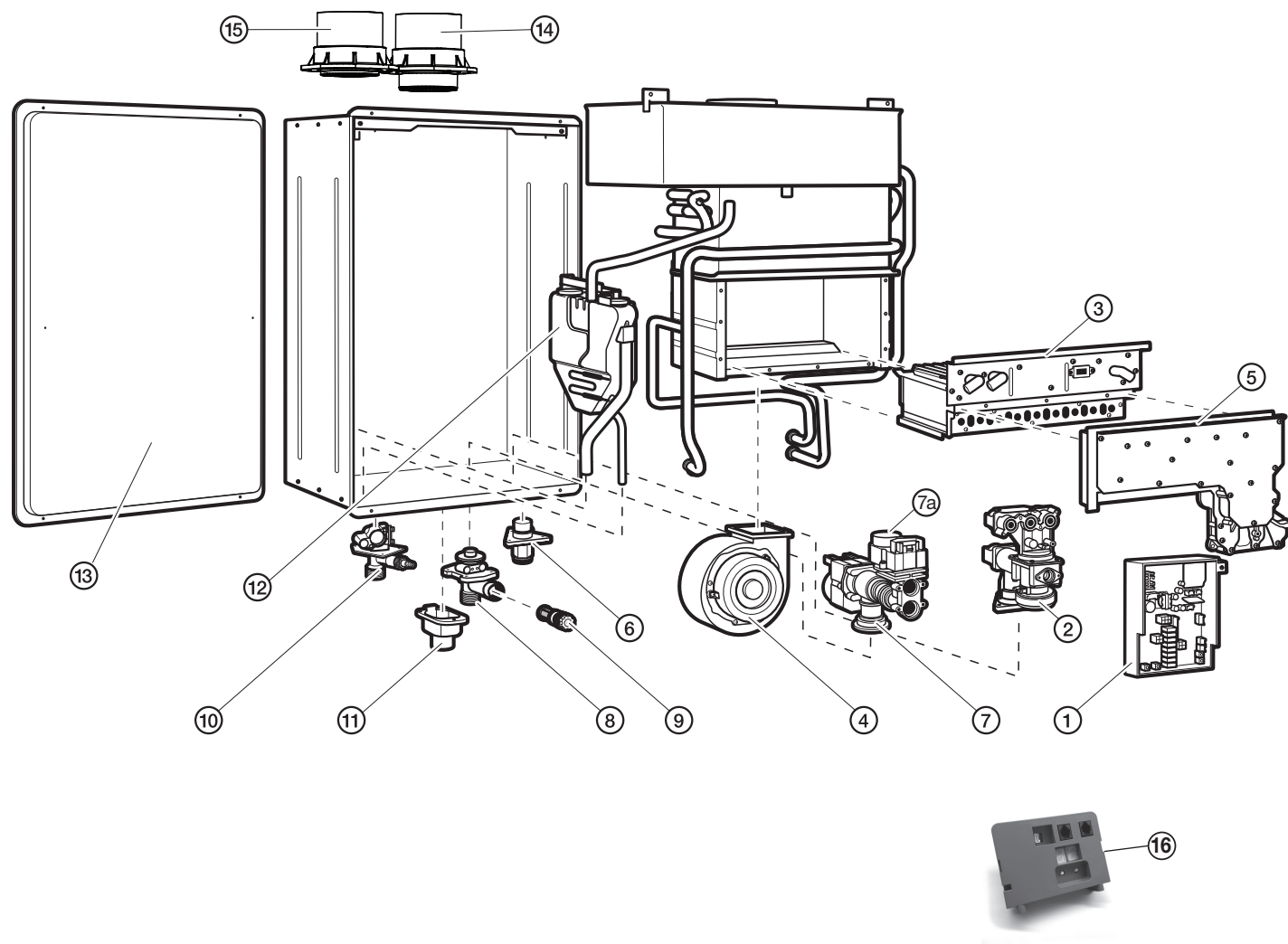
| Fuel Type | RTG-95X(E)LN/P-3 | RTG-84XLN/P-3 | RTG-70XLN/P-3 |
|-----------|------------------|---------------|---------------|
| Natural | RTG20330S | RTG20330U | RTG20330W |
| Propane | RTG20330T | RTG20330V | RTG20330X |

Parts for RTG-XL3 Series

| Ref # | Rheem Part # | Description | RTG-70XL-3 | RTG-84XL-3 | RTG-95XL-3 | RTG-95XEL-3 |
|-------|--------------|---|------------|------------|------------|-------------|
| 1 | RTG20329B | Mounting Bracket Kit | • | • | • | • |
| 2 | RTG20329L | Outlet HEX Thermistor with O-Ring | • | • | • | • |
| 3 | RTG20329AE | O-Ring Kit | • | • | • | • |
| 4 | RTG20330AM | Front Cover Final Assembly | • | • | • | • |
| 5 | RTG20329AB | Front Cover Screws | • | • | • | • |
| 6 | RTG20329AF | Non Wi-Fi Display | • | • | • | |
| 6 | RTG20329AG | Wi-Fi Display | | | | • |
| 7 | RTG20329M | Hot Water Thermistor with O-Ring | • | • | • | • |
| 8 | RTG20330R | Blower Motor Assembly | • | • | • | • |
| 9 | RTG20329F | Igniter & Flame Rod Kit | • | • | • | • |
| 10 | RTG20329K | Hot Water Connection Kit with O-Ring | • | • | • | • |
| 11 | RTG20329J | Drain Valve | • | • | • | • |
| 12 | RTG20329AV | Water Control Valve Kit with O-Ring | • | • | • | • |
| 13 | RTG20329AW | Ignitor Coil | • | • | • | • |
| 14 | RTG20330Q | Manifold Assembly Kit with Gas Proportional Valve (for LP) | • | • | • | • |
| 14 | RTG20330P | Manifold Assembly Kit with Gas Proportional Valve (for NAT) | • | • | • | • |
| 15 | RTG20329Z | Screw with Gasket - for Manifold Pressure Port | • | • | • | • |
| 16 | RTG20329P | PCB Kit | • | • | • | • |
| 17 | RTG20329G | Inlet Water Connection Assembly | • | • | • | • |
| 18 | RTG20329H | Water Filter | • | • | • | • |
| 19 | RTG20330AB | Power Cord | • | • | • | • |
| 20 | RTG20329AA | Screw with Gasket - for Inlet Gas Pressure Port | • | • | • | • |
| 21 | RTG20329C | Gas Connection Final Assembly with O-Ring | • | • | • | • |
| | RTG20329AJ | Outdoor Wi-Fi Harness | | | | • |
| | RTG20329AL | Leak Sensor Kit | | | | • |
| | RTG20329AK | Wi-Fi Display Mounting Assembly | | | | • |

See Pages 6 - 14 for Accessories, Manifold Systems, and Venting Options.

Parts for Commercial RTGH-C95DVL, RTGH-CM95DVL Series



Commercial Gas Chips

| Models | Non-Common Vent | Common Vent | |
|---------------------------------|------------------|-----------------|-----------------------|
| | Single Unit Chip | Inline Gas Chip | Back to Back Gas Chip |
| RTGH-CM95DVLN / RTGH-C95DVLN | RTG20261A | RTG20239BJ | RTG20239BW |
| RTGH-CM95DVLP / RTGH-C95DVLP | RTG20254B | N/A | N/A |

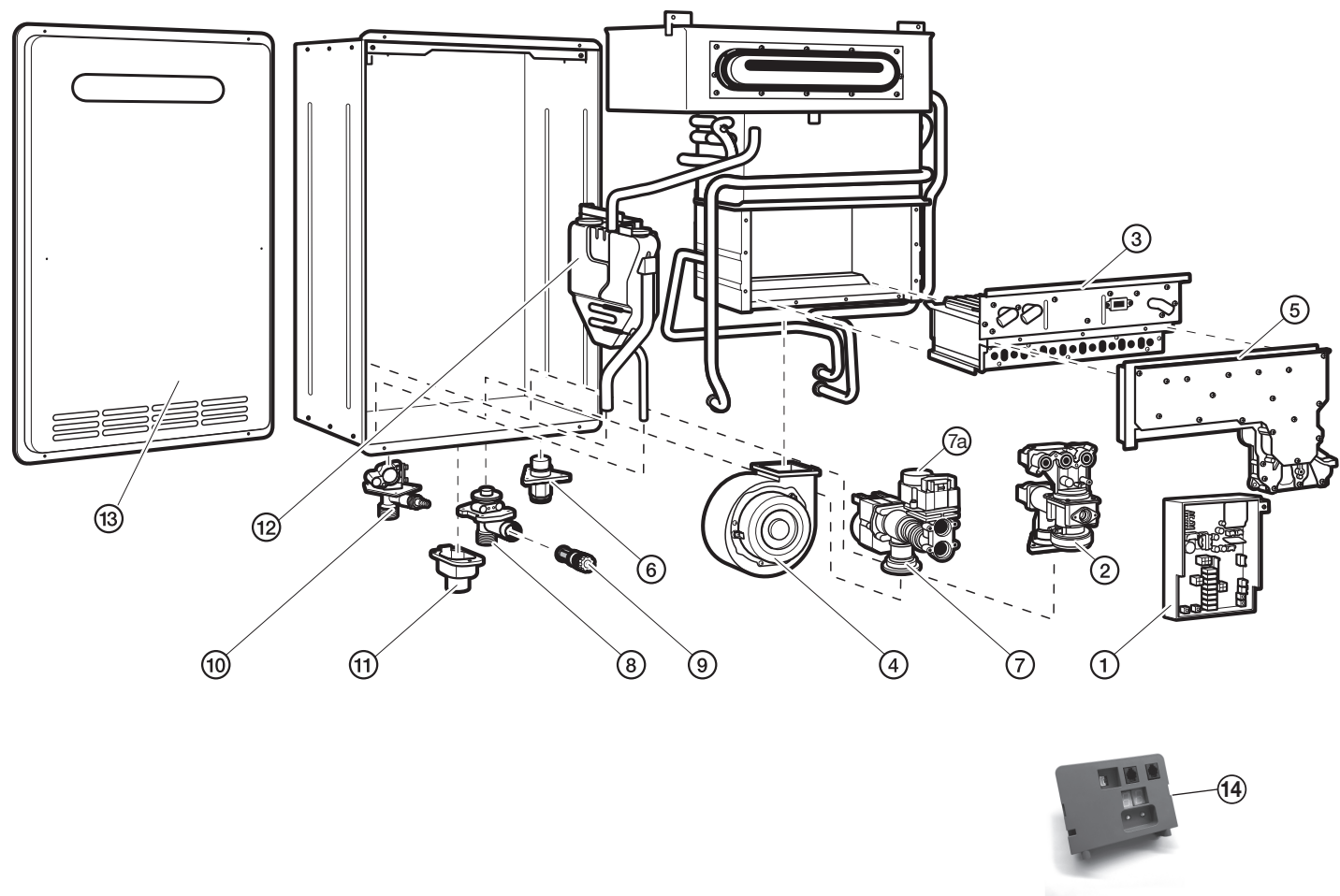
See Page 10 for manifold connection cables under Manifold Control Systems

Parts for Commercial RTGH-C95DVL, RTGH-CM95DVL Series

| Ref # | Rheem Part # | Description | RTGH-C95DVL | RTGH-CM95DVL |
|-------|--------------|---------------------------------------|-------------|--------------|
| 1 | RTG20239BH | Control Board | • | • |
| | RTG20006AR | Inlet Thermistor - White | • | • |
| | RTG20212BC | Heat Exchanger Thermistor - Yellow | • | • |
| | RTG20006BB | Outlet Thermistor - Black | • | • |
| | RTG20006UW | Ambient Thermistor - Blue | • | • |
| | RTG20223L | Vent High Temperature Limit Switch | • | • |
| | RTG20239M | Thermistor Wiring Harness | • | • |
| 2 | RTG20239AY | Gas Control Valve | • | • |
| | RTG20239AD | Gas Control Wiring Harness | • | • |
| 3 | RTG20235AD | Burner Assembly | • | • |
| | RTG20235C | Igniter Coil | • | • |
| | RTG20212BD | Igniter Rod (IG) (with gasket) | • | • |
| 4 | RTG20212K | Blower Motor | • | • |
| | RTG20223K | Blower Case | • | • |
| 5 | RTG20235W | Burner Manifold - LP | • | • |
| 5 | RTG20239AA | Burner Manifold NAT | • | • |
| | RTG20212BE | Flame Rod FL-1 (with gasket) | • | • |
| | RTG20235AX | Flame Rod Wire (White) | • | • |
| | RTG20212BG | Flame Rod FL-2 (with wire and gasket) | • | • |
| | RTG20223M | Flame Rod Wire (Blue) | • | • |
| 6 | RTG20164K | Gas Inlet Connector ¾" | • | • |
| 7 | RTG20164L | Water Control Valve | • | • |
| 7a | RTG20235X | Bypass Assembly | • | • |
| 8 | RTG20164J | Water Inlet Connector ¾" | • | • |
| 9 | RTG20164AK | Inlet Water Filter | • | • |
| 10 | RTG20074CE | Hot Water Outlet Connector ¾" | • | • |
| 11 | RTG20164AA | Remote Control Terminal Block | • | • |
| | RTG20212U | Remote Control Terminal | • | • |
| 12 | RTG20239BU | Neutralization Replacement Kit | • | • |
| 13 | RTG20239Z | Front Cover - No Labels or Branding | • | • |
| 14 | RTG20223Y | Exhaust Vent Outlet Connector - PVC | • | • |
| 15 | RTG20223X | Air Intake Inlet Connector - PVC | • | • |
| | AP20796 | Gas Shutoff Valve ¾" | • | • |
| | RTG20186 | Replacement Screw Kit | • | • |
| | RTG20206 | Replacement O-Ring Kit | • | • |
| | RTG20235AB | Thermostat Assembly | • | • |
| 16 | AP18297-4 | Smartec Translator Assembly | | • |
| | AP18278 | Smartec Communication Cable | | • |
| | AP18286 | Screw, 6-19 x 3/8 in. | | • |
| | AP18279 | Smartec Jumper Connector | | • |
| | RTG20212BH | Flame Rod Gaskets | | |
| | RTG20006CH | Power Cord | | |
| | RTG20239BD | 10 Amp Fuse | | |

See Pages 15 - 19 for Common Venting Accessories.

Parts for Commercial RTGH-C95XL, RTGH-CM95XL Series



Commercial Gas Chips

| Models | Non-Common Vent | Common Vent | |
|-------------------------------|--|-----------------|-----------------------|
| | Single Unit Chip | Inline Gas Chip | Back to Back Gas Chip |
| RTGH-CM95XLN / RTGH-C95XLN | RTG20254C RTG20312C¹ | N/A | N/A |
| RTGH-CM95XLP / RTGH-C95XLP | RTG20254D RTG20312D² | N/A | N/A |

¹For RTGH-C95XLN models with serial number W171840369 or greater; or for RTGH-CM95XLN models with serial number W181832981 or greater
²For RTGH-C95XLP models with serial number W181826801 or greater

See Page 10 for manifold connection cables under Manifold Control Systems

Parts for Commercial RTGH-C95XL, RTGH-CM95XL Series

| Ref # | Rheem Part # | Description | RTGH-C95XL | RTGH-CM95XL |
|-------|--------------|-------------------------------------|----------------|----------------|
| 1 | RTG20239BH | Control Board | • | • |
| | RTG20239CX | Control Board | • ¹ | • ² |
| | RTG20006AR | Inlet Thermistor - White | • | • |
| | RTG20212BC | Heat Exchanger Thermistor - Yellow | • | • |
| | RTG20006BB | Outlet Thermistor - Black | • | • |
| | RTG20006UW | Ambient Thermistor - Blue | • | • |
| | RTG20239M | Thermistor Wiring Harness | • | • |
| 2 | RTG20239AY | Gas Control Valve | • | • |
| | RTG20239AD | Gas Control Wiring Harness | • | • |
| 3 | RTG20235U | Burner Assembly | • | • |
| | RTG20235C | Igniter Coil | • | • |
| | RTG20212BD | Igniter Rod (IG) (with gasket) | • | • |
| 4 | RTG20212AB | Blower Motor | • | • |
| | RTG20212AC | Blower Case | • | • |
| 5 | RTG20235W | Burner Manifold - LP | • | • |
| 5 | RTG20235V | Burner Manifold NAT | • | • |
| | RTG20212BE | Flame Rod FL-1 (with gasket) | • | • |
| | RTG20235AX | Flame Rod Wire (White) | • | • |
| 6 | RTG20164K | Gas Inlet Connector ¾" | • | • |
| 7 | RTG20164L | Water Control Valve | • | • |
| 7 | RTG20239BT | Water Control Valve | • ¹ | • ² |
| 7a | RTG20235X | Bypass Assembly | • | • |
| 8 | RTG20164J | Water Inlet Connector ¾" | • | • |
| 9 | RTG20164AK | Inlet Water Filter | • | • |
| 10 | RTG20074CE | Hot Water Outlet Connector ¾" | • | • |
| | RTG20006AV | Drain Plug with Relief | • | • |
| 11 | RTG20164AA | Remote Control Terminal Block | • | • |
| | RTG20212U | Remote Control Terminal | • | • |
| 12 | RTG20239BU | Neutralization Replacement Kit | • | • |
| 13 | RTG20239Y | Front Cover - No Labels or Branding | • | • |
| | AP20796 | Gas Shutoff Valve ¾" | • | • |
| | RTG20186 | Replacement Screw Kit | • | • |
| | RTG20206 | Replacement O-Ring Kit | • | • |
| | RTG20235AB | Thermostat Assembly | • | • |
| 14 | AP18297-4 | Smartec Translator Assembly | | • |
| | AP18278 | Smartec Communication Cable | | • |
| | AP18286 | Screw, 6-19 x 3/8 in. | | • |
| | AP18279 | Smartec Jumper Connector | | • |
| | RTG20212BH | Flame Rod Gaskets | | |
| | RTG20006CH | Power Cord | | |
| | RTG20239BD | 10 Amp Fuse | | |

¹For RTGH-C95XLN models with serial number W171840369 or greater; or RTGH-C95XLP models with serial number W181826801

²For RTGH-CM95XLN models with serial number W181832981 or greater

See Pages 15 - 19 for Common Venting Accessories.

Tankless Model Cross Reference and Notes

Non-Condensing Tankless Model Cross Reference

| Rheem | Ruud | Richmond | Rheem Performance | Paloma |
|---------------|----------------|---------------|-------------------|--------------|
| RTG-64DVN | RUTG-64DVN | RMTG64DVN | ECO150DVN3 | PH2-20RDVSN |
| RTG-64DVP | RUTG-64DVP | RMTG64DVP | ECO150DVP3 | PH2-20RDVSP |
| RTG-64XN | RUTG-64XN | RMTG64XN | ECO150XN3 | PH2-20ROFN |
| RTG-64XP | RUTG-64XP | RMTG64XP | ECO150XP3 | PH2-20ROFP |
| RTG-84DVN | RUTG-84DVN | RMTG84DVN | ECO180DVN3 | PH2-25RDVSN |
| RTG-84DVP | RUTG-84DVP | RMTG84DVP | ECO180DVP3 | PH2-25RDVSP |
| RTG-84XN | RUTG-84XN | RMTG84XN | ECO180XN3 | PH2-25ROFN |
| RTG-84XP | RUTG-84XP | RMTG84XP | ECO180XP3 | PH2-25ROFP |
| RTG-95DVN | RUTG-95DVN | RMTG95DVN | ECO200DVN3 | PH2-28RDVSN |
| RTG-95DVP | RUTG-95DVP | RMTG95DVP | ECO200DVP3 | PH2-28RDVSP |
| RTG-95XN | RUTG-95XN | RMTG95XN | ECO200XN3 | PH2-28ROFN |
| RTG-95XP | RUTG-95XP | RMTG95XP | ECO200XP3 | PH2-28ROFP |
| RTG-64DVLN | RUTG-64DVLN | RMTG64DVLN | ECO150DVLN3 | PH2-20RDVSLN |
| RTG-64DVLP | RUTG-64DVLP | RMTG64DVLP | ECO150DVLP3 | PH2-20RDVSLP |
| RTG-64XLN | RUTG-64XLN | RMTG64XLN | ECO150XLN3 | PH2-20ROFLN |
| RTG-64XLP | RUTG-64XLP | RMTG64XLP | ECO150XLP3 | PH2-20ROFLP |
| RTG-70DVLN | RUTG-70DVLN | RMTG70DVLN | ECO160DVLN3 | |
| RTG-70DVLP | RUTG-70DVLP | RMTG70DVLP | ECO160DVLP3 | |
| RTG-70XLN | RUTG-70XLN | RMTG70XLN | ECO160XLN3 | |
| RTG-70XLP | RUTG-70XLP | RMTG70XLP | ECO160XLP3 | |
| RTG-84DVLN | RUTG-84DVLN | RMTG84DVLN | ECO180DVLN3 | PH2-25RDVSLN |
| RTG-84DVLP | RUTG-84DVLP | RMTG84DVLP | ECO180DVLP3 | PH2-25RDVSLP |
| RTG-84XLN | RUTG-84XLN | RMTG84XLN | ECO180XLN3 | PH2-25ROFLN |
| RTG-84XLP | RUTG-84XLP | RMTG84XLP | ECO180XLP3 | PH2-25ROFLP |
| RTG-95DVLN | RUTG-95DVLN | RMTG95DVLN | ECO200DVLN3 | PH2-28RDVSLN |
| RTG-95DVLP | RUTG-95DVLP | RMTG95DVLP | ECO200DVLP3 | PH2-28RDVSLP |
| RTG-95XLN | RUTG-95XLN | RMTG95XLN | ECO200XLN3 | PH2-28ROFLN |
| RTG-95XLP | RUTG-95XLP | RMTG95XLP | ECO200XLP3 | PH2-28ROFLP |
| RTG-95DVELN | RUTG-95DVELN | RMTG95DVELN | ECO200DVELN3 | |
| RTG-95DVELP | RUTG-95DVELP | RMTG95DVELP | ECO200DVELP3 | |
| RTG-95XELN | RUTG-95XELN | RMTG95XELN | ECO200XELN3 | |
| RTG-95XELP | RUTG-95XELP | RMTG95XELP | ECO200XELP3 | |
| RTG-RC95DVELN | RUTG-RC95DVELN | RMTGRC95DVELN | ECO200DVRCELN3 | |
| RTG-RC95DVELP | RUTG-RC95DVELP | RMTGRC95DVELP | ECO200DVRCELP3 | |

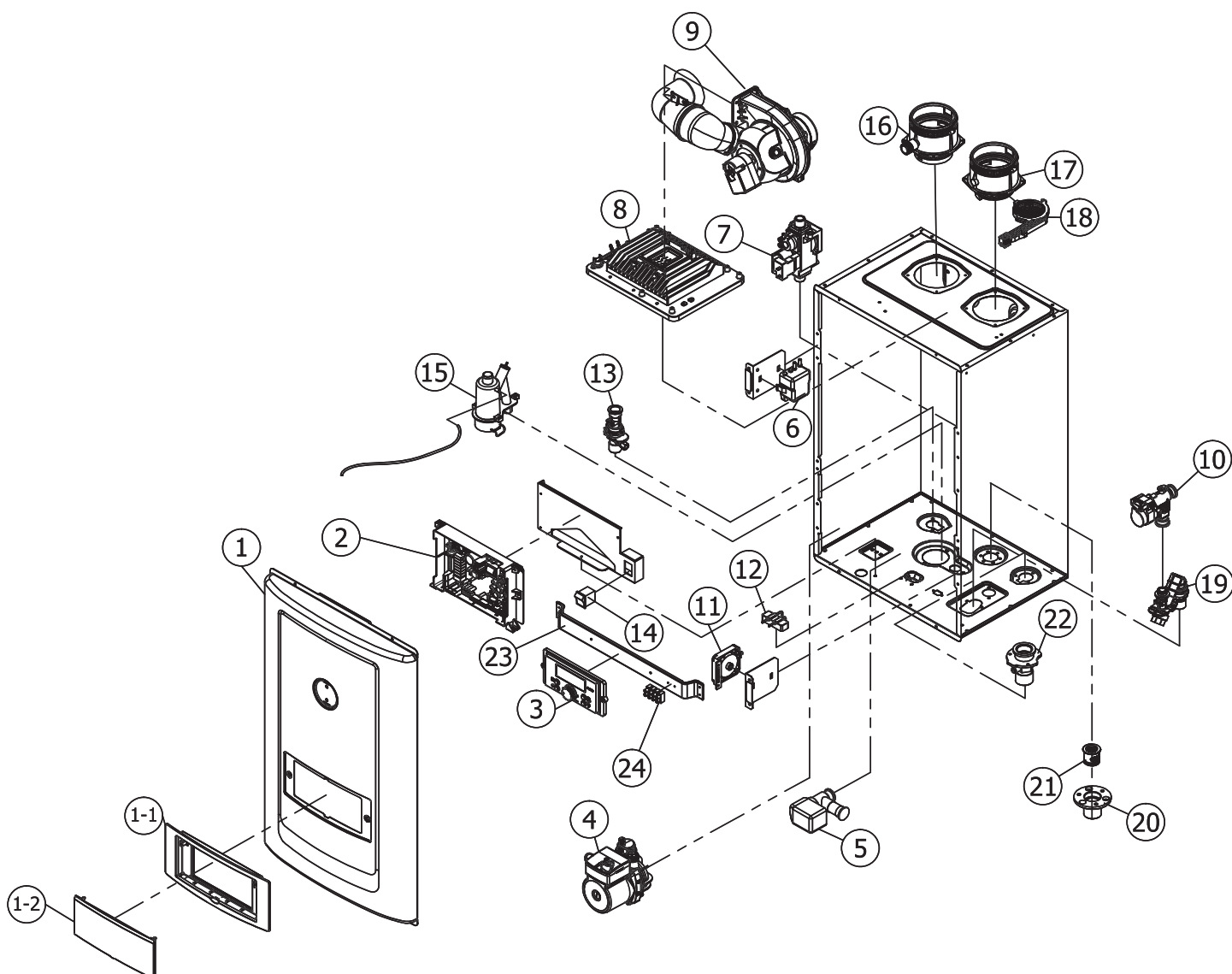
Parts for the Non-Condensing Tankless Models begin on page 24.

Tankless Model Cross Reference

Condensing Tankless Model Cross Reference

| Rheem | Ruud | Richmond | Rheem Performance | Paloma |
|---------------|----------------|----------------|-------------------|-------------|
| RTGH-95DVN | RUTGH-95DVN | RMTGH95DVN | ECOH200DVN | PHH-32RDVN |
| RTGH-95DVP | RUTGH-95DVP | RMTGH95DVP | ECOH200DVP | PHH-32RDVP |
| RTGH-95XN | RUTGH-95XN | RMTGH95XN | ECOH200XN | PHH-32ROFN |
| RTGH-95XP | RUTGH-95XP | RMTGH95XP | ECOH200XP | PHH-32ROFP |
| RTGH-84DVN | RUTGH-84DVN | RMTGH84DVN | ECOH160DVN | PHH-25RDVN |
| RTGH-84DVP | RUTGH-84DVP | RMTGH84DVP | ECOH160DVP | PHH-25RDVP |
| RTGH-84XN | RUTGH-84XN | RMTGH84XN | ECOH160XN | PHH-25ROFN |
| RTGH-84XP | RUTGH-84XP | RMTGH84XP | ECOH160XP | PHH-25ROFP |
| RTGH-95DVLN | RUTGH-95DVLN | RMTGH95DVLN | ECOH200DVLN | PHH-32RDVLN |
| RTGH-95DVLV | RUTGH-95DVLV | RMTGH95DVLV | ECOH200DVLV | PHH-32RDVLV |
| RTGH-95XLN | RUTGH-95XLN | RMTGH95XLN | ECOH200XLN | PHH-32ROFLN |
| RTGH-95XLP | RUTGH-95XLP | RMTGH95XLP | ECOH200XLP | PHH-32ROFLP |
| RTGH-95DVELN | RUTGH-95DVELN | RMTGH95DVELN | ECOH200DVELN | |
| RTGH-95DVELP | RUTGH-95DVELP | RMTGH95DVELP | ECOH200DVELP | |
| RTGH-95XELN | RUTGH-95XELN | RMTGH95XELN | ECOH200XELN | |
| RTGH-95XELP | RUTGH-95XELP | RMTGH95XELP | ECOH200XELP | |
| RTGH-RH11DVLN | RUTGH-RH11DVLN | RMTGH-RH11DVLN | ECO200DVHRLN | |
| RTGH-RH11DVLV | RUTGH-RH11DVLV | RMTGH-RH11DVLV | ECO200DVHRLV | |
| RTGH-RH10DVLN | RUTGH-RH10DVLN | RMTGH-RH10DVLN | ECO180DVHRLN | |
| RTGH-RH10DVLV | RUTGH-RH10DVLV | RMTGH-RH10DVLV | ECO180DVHRLV | |
| RTGH-90DVLN | RUTGH-90DVLN | RMTGH90DVLN | ECOH180DVLN | PHH-29RDVLN |
| RTGH-90DVLV | RUTGH-90DVLV | RMTGH90DVLV | ECOH180DVLV | PHH-29RDVLV |
| RTGH-90XLN | RUTGH-90XLN | RMTGH90XLN | ECOH180XLN | PHH-29ROFLN |
| RTGH-90XLP | RUTGH-90XLP | RMTGH90XLP | ECOH180XLP | PHH-29ROFLP |
| RTGH-84DVLN | RUTGH-84DVLN | RMTGH84DVLN | ECOH160DVLN | PHH-25RDVLN |
| RTGH-84DVLV | RUTGH-84DVLV | RMTGH84DVLV | ECOH160DVLV | PHH-25RDVLV |
| RTGH-84XLN | RUTGH-84XLN | RMTGH84XLN | ECOH160XLN | PHH-25ROFLN |
| RTGH-84XLP | RUTGH-84XLP | RMTGH84XLP | ECOH160XLP | PHH-25ROFLP |
| RTGH-C95DVLN | RUTGH-C95DVLN | | | |
| RTGH-C95DVLV | RUTGH-C95DVLV | | | |
| RTGH-C95XLP | RUTGH-C95XLP | | | |
| RTGH-C95XLP | RUTGH-C95XLP | | | |
| RTGH-CM95DVLN | RUTGH-CM95DVLN | | | |
| RTGH-CM95DVLV | RUTGH-CM95DVLV | | | |
| RTGH-CM95XLP | RUTGH-CM95XLP | | | |
| RTGH-CM95XLP | RUTGH-CM95XLP | | | |
| RTGH-S11iN | RUTGH-S11iN | RMTGH-S11iN | ECOHS200iN | |
| | | RMTGH-S11iP | ECOHS200iP | |
| RTGH-SR11iN | RUTGH-SR11iN | RMTGH-SR11iN | ECOHSR200iN | |
| | | RMTGH-SR11iP | ECOHSR200iP | |
| RTGH-S10iN | RUTGH-S10iN | RMTGH-S10iN | ECOHS180iN | |
| | | RMTGH-S10iP | ECOHS180iP | |
| RTGH-SR10iN | RUTGH-SR10iN | RMTGH-SR10iN | ECOHSR180iN | |
| | | RMTGH-SR10iP | ECOHSR180iP | |
| RTGH-S84iN | RUTGH-S84iN | RMTGH-S84iN | ECOHS160iN | |
| | | RMTGH-S84iP | ECOHS160iP | |
| RTGH-SR84iN | RUTGH-SR84iN | RMTGH-SR84iN | ECOHSR160iN | |
| | | RTGH-SR84iP | ECOHSR160iP | |

Parts for the Non-Condensing Tankless Models begin on page 20.



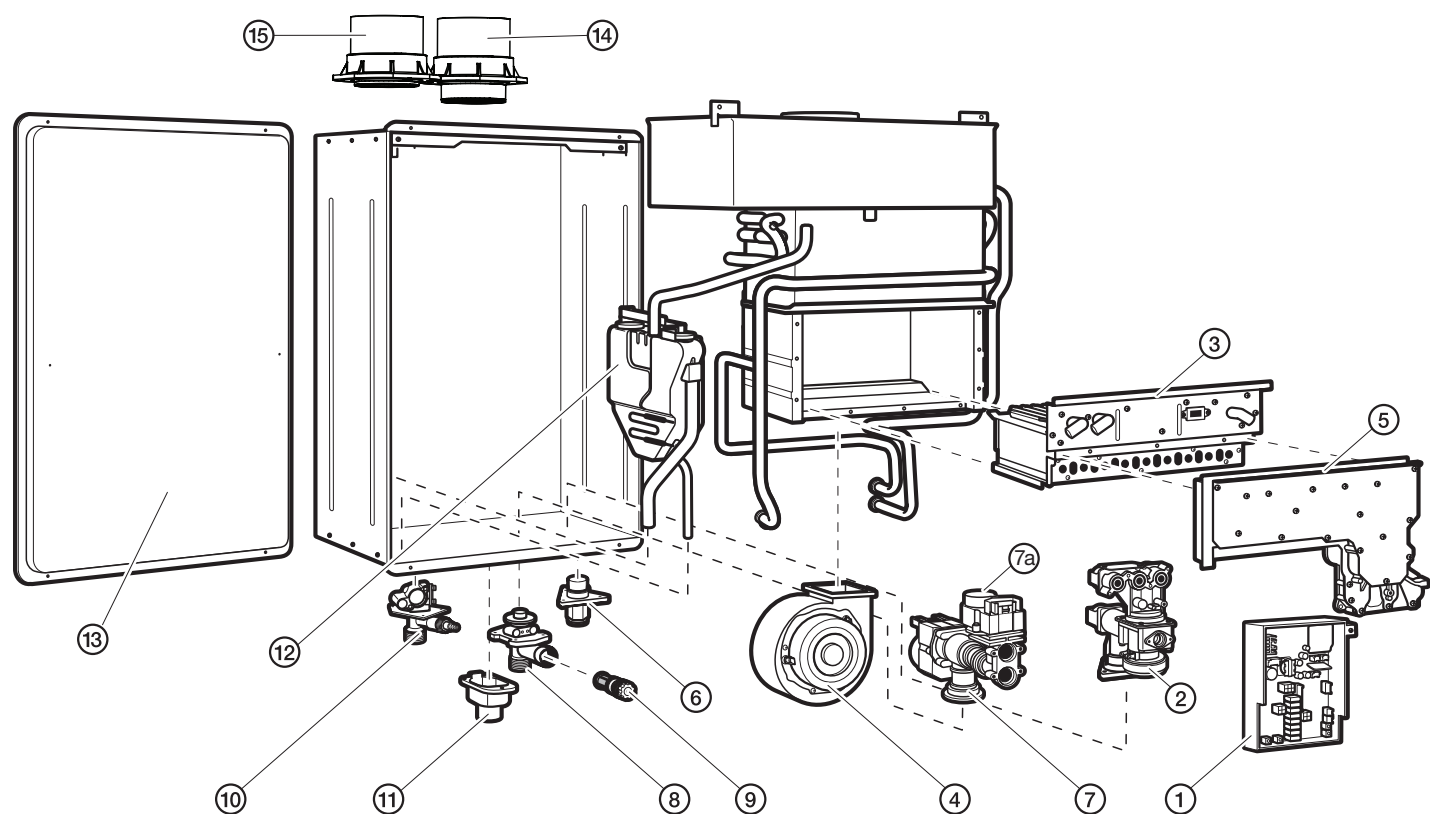
*This part is fulfilled through Rheem Water Heating Division. Not stocked at RPD.

Parts for RTGH-RH10DVL, RTGH-RH11DVL Series (out of production)

| Ref # | Rheem Part # | Description | RTGH-RH10DVL | RTGH-RH11DVL |
|-------|--------------|---|--------------|--------------|
| 1 | RTG20298AM | Front Cover Assembly | • | • |
| 1-1 | RTG20298AN | Display Panel Bracket | • | • |
| 1-2 | RTG20298AP | Display Panel Cover | • | • |
| 2 | RTG20298AU | PCB (Control Board) | • | • |
| 3 | RTG20298AR | Panel Window | • | • |
| 4 | RTG20299AP | Circulation Pump | • | • |
| 5 | RTG20299AV | Mixing Valve | • | • |
| 6 | RTG20298AF | Igniter Transformer | • | • |
| 7 | RTG20300T | Gas Valve Assembly | • | • |
| 8 | RTG20299C | Burner Assembly | • | • |
| 9 | RTG20310 | Fan & AGM Assembly Kit - Natural Gas models | • | • |
| 9 | RTG20317 | Fan & AGM Assembly Kit - LP models | • | • |
| 10 | RTG20298N | Flow Control Valve | • | • |
| 11 | RTG20298AH | Air Pressure Switch | • | • |
| 12 | RTG20298AK | Water Leak Detector | • | • |
| 13 | RTG20298H | Hot Water Pipe Assembly | • | • |
| 14 | RTG20298AV | Power Switch | • | • |
| 15 | RTG20298U | Condensate Trap | • | • |
| 16 | RTG20298X | Exhaust Assembly | • | • |
| 17 | RTG20298Y | Air Intake Assembly | • | • |
| 18 | RTG20298AC | Air Intake Filter | • | • |
| 19 | RTG20298B | Water Inlet Valve Assembly | • | • |
| 20 | RTG20298R | Recirculation Return Connection | • | • |
| 21 | RTG20298S | Check Valve | • | • |
| 22 | RTG20298A | Gas Inlet Nipple | • | • |
| 23 | RTG20298AT | Display Panel Bracket | • | • |
| 24 | RTG20298BE | On-Demand Kit Terminal Block | • | • |
| | RTG20298E | Water Inlet Filter | • | • |
| | RTG20298F | O-Ring (P20) | • | • |
| | RTG20299X | Flame Detector Sensor | • | • |
| | RTG20298P | O-Ring (P16) | • | • |
| | RTG20299F | Ignition Rod | • | • |
| | RTG20299AL | Water Hammer Arrestor | • | • |
| | RTG20299AC | Heat Exchanger Temperature Sensor | • | • |
| | RTG20299AH | Mixing Valve O-Ring | • | • |
| | RTG20316CF | Flame Sensor Metal Plate | • | • |
| | RTG20316CG | Flame Sensor Bracket | • | • |
| | RTG20316CH | Flame Sensor Glass & Gasket | • | • |
| | RTG20316CJ | Flame View Glass | • | • |
| | RTG20316CK | Flame View Gasket | • | • |
| | RTG20316CL | Flame View Bracket | • | • |
| | RTG20300D | AGM Actuator | • | • |

See Pages 6 - 14 for Accessories, Manifold Systems, and Venting Options.

Parts for RTGH-84DVL-1 or -2, RTGH-90DVL-1 or -2, RTGH-95DVL-1 or -2 Series
(out of production)



Program Chips

| Fuel Type | RTGH-84DVLN/P-1 | RTGH-90DVLN/P-1 | RTGH-95DVLN/P-1 |
|-----------|-------------------------|-------------------------|-------------------------|
| Natural | RTG20239AJ | RTG20239AN | RTG20239AE |
| Natural | RTG20239BG ¹ | RTG20239BF ² | RTG20239BE ³ |
| Propane | RTG20239AK | RTG20239AP | RTG20239AF |

| Fuel Type | RTGH-68DVLN/P-2 | RTGH-84DVLN/P-2 | RTGH-90DVLN/P-2 | RTGH-95DVLN/P-2 |
|--------------|-----------------|-----------------|-----------------|-----------------|
| U.S. Natural | RTG20239CK | RTG20239CB | RTG20239CF | RTG20239BX |
| U.S. Propane | RTG20239CL | RTG20239CC | RTG20239CG | RTG20239BY |
| Can. Natural | N/A | RTG20239CS | RTG20239CU | RTG20239CP |
| Can. Propane | N/A | RTG20239CT | RTG20239CV | RTG20239CR |

185°F Temperature Upgrade Kits - Commercial and Hydronic

| Fuel Type | RTGH-84DVLN/P-1 | RTGH-90DVLN/P-1 | RTGH-95DVLN/P-1 |
|-----------|------------------------|------------------------|------------------------|
| Natural | RTG20256A | RTG20255A | RTG20254A |
| Natural | RTG20263A ¹ | RTG20262A ² | RTG20261A ³ |
| Propane | RTG20256B | RTG20255B | RTG20254B |

| Fuel Type | RTGH-68DVLN/P-2 | RTGH-84DVLN/P-2 | RTGH-90DVLN/P-2 | RTGH-95DVLN/P-2 |
|--------------|-----------------|-----------------|-----------------|-----------------|
| U.S. Natural | N/A | RTG20314A | RTG20313A | RTG20312A |
| U.S. Propane | N/A | RTG20314B | RTG20313B | RTG20312B |
| Can. Natural | N/A | RTG20314E | RTG20313E | RTG20312E |
| Can. Propane | N/A | RTG20314F | RTG20313F | RTG20312F |

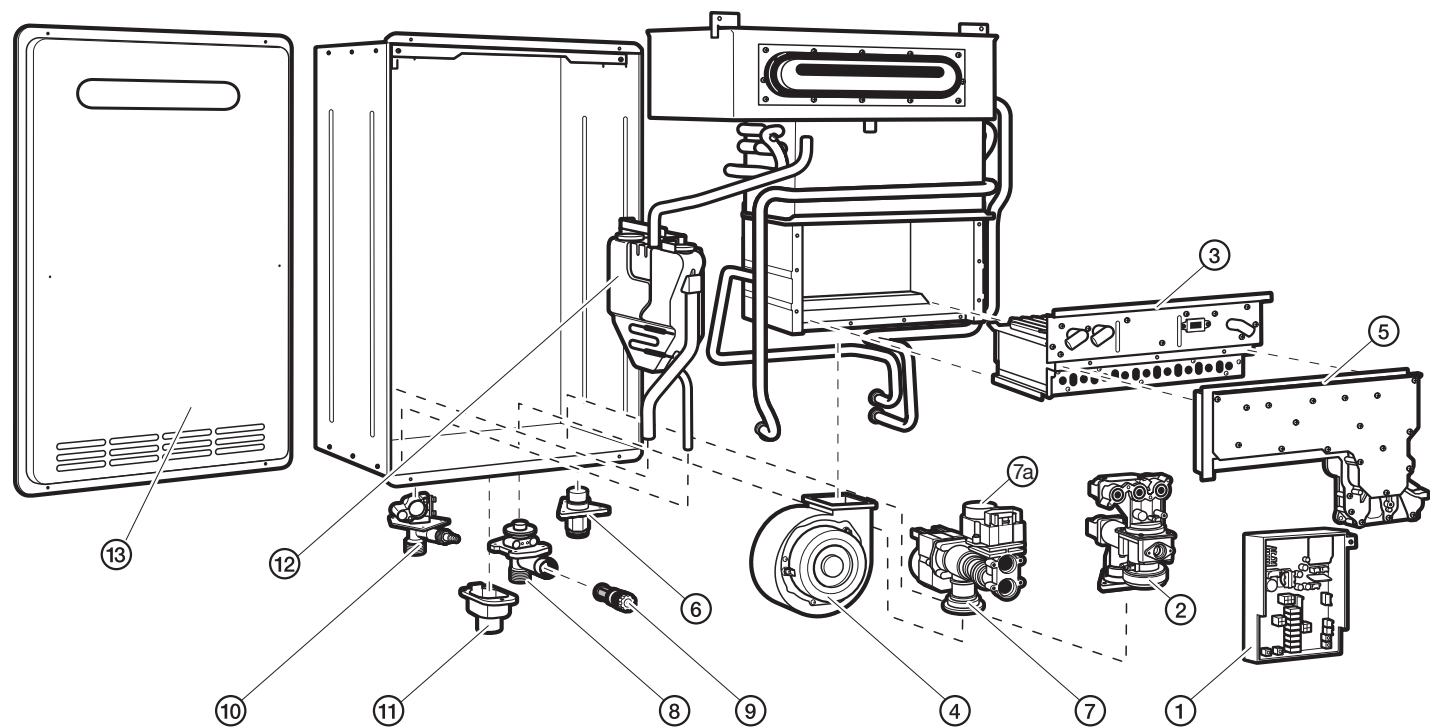
¹New Part Number for RTGH-84DVLN-1 Tankless Water Heaters with Serial Number higher than W051733461.
²New Part Number for RTGH-90DVLN-1 Tankless Water Heaters with Serial Number higher than W061709751.
³New Part Number for RTGH-95DVLN-1 Tankless Water Heaters with Serial Number higher than W061706204.

Parts for RTGH-84DVL-1 or -2, RTGH-90DVL-1 or -2, RTGH-95DVL-1 or -2 Series (out of production)

| Ref # | Rheem Part # | Description | RTGH-84DVL-1 | RTGH-84DVL-2 | RTGH-90DVL-1 | RTGH-90DVL-2 | RTGH-95DVL-1 | RTGH-95DVL-2 |
|-------|--------------|--|--------------|--------------|--------------|--------------|--------------|--------------|
| 1 | RTG20239BH | Control Board | • | | • | | • | |
| 1 | RTG20239CX | Control Board | | • | | • | | • |
| | RTG20006AR | Inlet Thermistor - White | • | • | • | • | • | • |
| | RTG20212BC | Heat Exchanger Thermistor - Yellow | • | • | • | • | • | • |
| | RTG20006BB | Outlet Thermistor - Black | • | • | • | • | • | • |
| | RTG20006UW | Ambient Thermistor - Blue | • | • | • | • | • | • |
| | RTG20223L | Vent High Temperature Limit Switch | • | • | • | • | • | • |
| | RTG20239M | Thermistor Wiring Harness | • | • | • | • | • | • |
| 2 | RTG20239AY | Gas Control Valve | • | • | • | • | • | • |
| | RTG20239AD | Gas Control Wiring Harness | • | • | • | • | • | • |
| 3 | RTG20235AD | Burner Assembly | • | • | • | • | • | • |
| | RTG20235C | Igniter Coil | • | • | • | • | • | • |
| | RTG20212BD | Igniter Rod (IG) (with gasket) | • | • | • | • | • | • |
| 4 | RTG20212K | Blower Motor | • | | • | | • | |
| | RTG20223K | Blower Case | • | | • | | • | |
| 4 | RTG20239BL | Blower Motor | | • | | • | | • |
| | RTG20239BM | Blower Case | | • | | • | | • |
| 5 | RTG20235W | Burner Manifold - LP | • | • | • | • | • | • |
| 5 | RTG20239AA | Burner Manifold NAT | • | | • | | • | |
| 5 | RTG20235V | Burner Manifold NAT | | • | | • | | • |
| | RTG20212BE | Flame Rod FL-1 (with gasket) | • | • | • | • | • | • |
| | RTG20235AX | Flame Rod Wire (White) | • | • | • | • | • | • |
| | RTG20212BG | Flame Rod FL-2 (with wire and gasket) | • | • | • | • | • | • |
| | RTG20223M | Flame Rod Wire (Blue) | • | • | • | • | • | • |
| 6 | RTG20164K | Gas Inlet Connector ¾" | • | • | • | • | • | • |
| 7 | RTG20164L | Water Control Valve | • | | • | | • | |
| 7 | RTG20239BT | Water Control Valve | | • | | • | | • |
| 7a | RTG20235X | Bypass Assembly | • | • | • | • | • | • |
| 8 | RTG20164J | Water Inlet Connector ¾" | • | • | • | • | • | • |
| 9 | RTG20164AK | Inlet Water Filter | • | • | • | • | • | • |
| 10 | RTG20074CE | Hot Water Outlet Connector ¾" | • | • | • | • | • | • |
| 11 | RTG20164AA | Remote Control Terminal Block | • | • | • | • | • | • |
| | RTG20212U | Remote Control Terminal | • | • | • | • | • | • |
| 12 | RTG20239BU | Neutralization Replacement Kit | • | • | • | • | • | • |
| 13 | RTG20239Z | Front Cover - No Labels or Branding | • | • | • | • | • | • |
| 14 | RTG20223Y | Exhaust Vent Outlet Connector - 3" PVC | • | | • | | • | |
| 14 | RTG20239BS | Exhaust Vent Outlet Connector - 2" PVC | | • | | • | | • |
| 15 | RTG20223X | Air Intake Inlet Connector - 3" PVC | • | | • | | • | |
| 15 | RTG20239BR | Air Intake Inlet Connector - 2" PVC | | • | | • | | • |
| | RTG20239BN | Gaskets for Intake & Exhaust | | • | | • | | • |
| | RTG20239BP | Locking Band for Intake & Exhaust | | • | | • | | • |
| | AP20796 | Gas Shutoff Valve ¾" | • | • | • | • | • | • |
| | RTG20186 | Replacement Screw Kit | • | • | • | • | • | • |
| | RTG20206 | Replacement O-Ring Kit | • | • | • | • | • | • |
| | RTG20235AB | Thermostat Assembly | • | • | • | • | • | • |
| | RTG20239BK | EZ Hanging Bracket | | • | | • | | • |
| | RTG20212BH | Flame Rod Gaskets | | | | | | |
| | RTG20006CH | Power Cord | | | | | | |
| | RTG20239BD | 10 Amp Fuse | | | | | | |
| | RTG20239L | GCV/Igniter Coil wiring harness | | | | | | |
| | RTG20223V | GCV/Fuse wiring harness | | | | | | |

See Pages 6 - 14 for Accessories, Manifold Systems, and Venting Options.

Parts for RTGH-84XL-1 or -2, RTGH-90XL-1 or -2, RTGH-95XL-1 or -2 Series
(out of production)



Program Chips

| Fuel Type | RTGH-84XLN/P-1 | RTGH-90XLN/P-1 | RTGH-95XLN/P-1 |
|-----------|----------------|----------------|----------------|
| Natural | RTG20239AL | RTG20239AR | RTG20239AG |
| Propane | RTG20239AM | RTG20239AS | RTG20239AH |

| Fuel Type | RTGH-68XLN/P-2 | RTGH-84XLN/P-2 | RTGH-90XLN/P-2 | RTGH-95XLN/P-2 |
|-----------|----------------|----------------|----------------|----------------|
| Natural | RTG20239CM | RTG20239CD | RTG20239CH | RTG20239BZ |
| Propane | RTG20239CN | RTG20239CE | RTG20239CJ | RTG20239CA |

185°F Temperature Upgrade Kits - Commercial and Hydronic

| Fuel Type | RTGH-84XLN/P-1 | RTGH-90XLN/P-1 | RTGH-95XLN/P-1 |
|-----------|----------------|----------------|----------------|
| Natural | RTG20256C | RTG20255C | RTG20254C |
| Propane | RTG20256D | RTG20255D | RTG20254D |

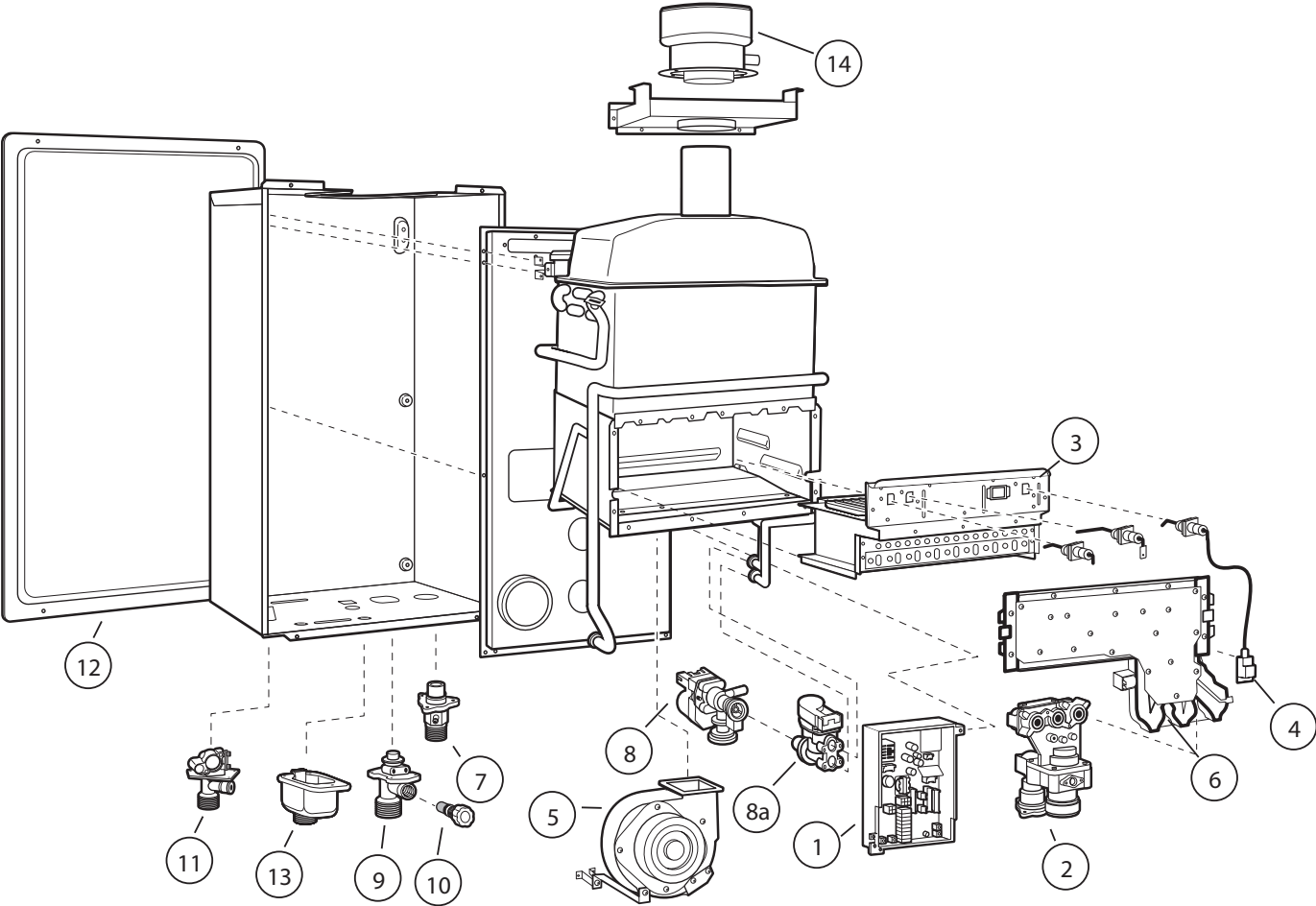
| Fuel Type | RTGH-68XLN/P-2 | RTGH-84XLN/P-2 | RTGH-90XLN/P-2 | RTGH-95XLN/P-2 |
|-----------|----------------|----------------|----------------|----------------|
| Natural | N/A | RTG20314C | RTG20313C | RTG20312C |
| Propane | N/A | RTG20314D | RTG20313D | RTG20312D |

Parts for RTGH-84XL-1 or -2, RTGH-90XL-1 or -2, RTGH-95XL-1 or -2 Series (out of production)

| Ref # | Rheem Part # | Description | RTGH-84XL-1 | RTGH-84XL-2 | RTGH-90XL-1 | RTGH-90XL-2 | RTGH-95XL-1 | RTGH-95XL-2 |
|-------|--------------|-------------------------------------|-------------|-------------|-------------|-------------|-------------|-------------|
| 1 | RTG20239BH | Control Board | • | | • | | • | |
| 1 | RTG20239CX | Control Board | | • | | • | | • |
| | RTG20006AR | Inlet Thermistor - White | • | • | • | • | • | • |
| | RTG20212BC | Heat Exchanger Thermistor - Yellow | • | • | • | • | • | • |
| | RTG20006BB | Outlet Thermistor - Black | • | • | • | • | • | • |
| | RTG20006UW | Ambient Thermistor - Blue | • | • | • | • | • | • |
| | RTG20239M | Thermistor Wiring Harness | • | • | • | • | • | • |
| 2 | RTG20239AY | Gas Control Valve | • | • | • | • | • | • |
| | RTG20239AD | Gas Control Wiring Harness | • | • | • | • | • | • |
| 3 | RTG20235U | Burner Assembly | • | • | • | • | • | • |
| | RTG20235C | Igniter Coil | • | • | • | • | • | • |
| | RTG20212BD | Igniter Rod (IG) (with gasket) | • | • | • | • | • | • |
| 4 | RTG20212AB | Blower Motor | • | • | • | • | • | • |
| | RTG20212AC | Blower Case | • | • | • | • | • | • |
| 5 | RTG20235W | Burner Manifold - LP | • | • | • | • | • | • |
| 5 | RTG20235V | Burner Manifold NAT | • | • | • | • | • | • |
| | RTG20212BE | Flame Rod FL-1 (with gasket) | • | • | • | • | • | • |
| | RTG20235AX | Flame Rod Wire (White) | • | • | • | • | • | • |
| 6 | RTG20164K | Gas Inlet Connector ¾" | • | • | • | • | • | • |
| 7 | RTG20164L | Water Control Valve | • | | • | | • | |
| 7 | RTG20239BT | Water Control Valve | | • | | • | | • |
| 7a | RTG20235X | Bypass Assembly | • | • | • | • | • | • |
| 8 | RTG20164J | Water Inlet Connector ¾" | • | • | • | • | • | • |
| 9 | RTG20164AK | Inlet Water Filter | • | • | • | • | • | • |
| 10 | RTG20074CE | Hot Water Outlet Connector ¾" | • | • | • | • | • | • |
| | RTG20006AV | Drain Plug with Relief | • | • | • | • | • | • |
| 11 | RTG20164AA | Remote Control Terminal Block | • | • | • | • | • | • |
| | RTG20212U | Remote Control Terminal | • | • | • | • | • | • |
| 12 | RTG20239BU | Neutralization Replacement Kit | • | • | • | • | • | • |
| 13 | RTG20239Y | Front Cover - No Labels or Branding | • | • | • | • | • | • |
| | RTG20074EH | Gas Shutoff Valve ¾" | • | • | • | • | • | • |
| | RTG20186 | Replacement Screw Kit | • | • | • | • | • | • |
| | RTG20206 | Replacement O-Ring Kit | • | • | • | • | • | • |
| | RTG20235AB | Thermostat Assembly | • | • | • | • | • | • |
| | RTG20212BH | Flame Rod Gaskets | • | • | • | • | • | • |
| | RTG20006CH | Power Cord | • | • | • | • | • | • |
| | RTG20239BD | 10 Amp Fuse | • | • | • | • | • | • |
| | RTG20239L | GCV/Igniter Coil wiring harness | • | • | • | • | • | • |
| | RTG20223V | GCV/Fuse wiring harness | • | • | • | • | • | • |

See Pages 6 - 14 for Accessories, Manifold Systems, and Venting Options.

Parts for RTG-64DVL-1, RTG-70DVL-1, RTG-84DVL-1, RTG-95DVL-1 Series (out of production)



Program Chips

| Fuel Type | RTG-64DVLN/P-1 | RTG-70DVLN/P-1 | RTG-84DVLN/P-1 | RTG-95DVLN/P-1 |
|-----------|----------------|----------------|----------------|----------------|
| Natural | RTG20235AN | RTG20235AY | RTG20235AJ | RTG20235AE |
| Propane | RTG20235AP | RTG20235AZ | RTG20235AK | RTG20235AF |

185°F Temperature Upgrade Kits - Commercial and Hydronic

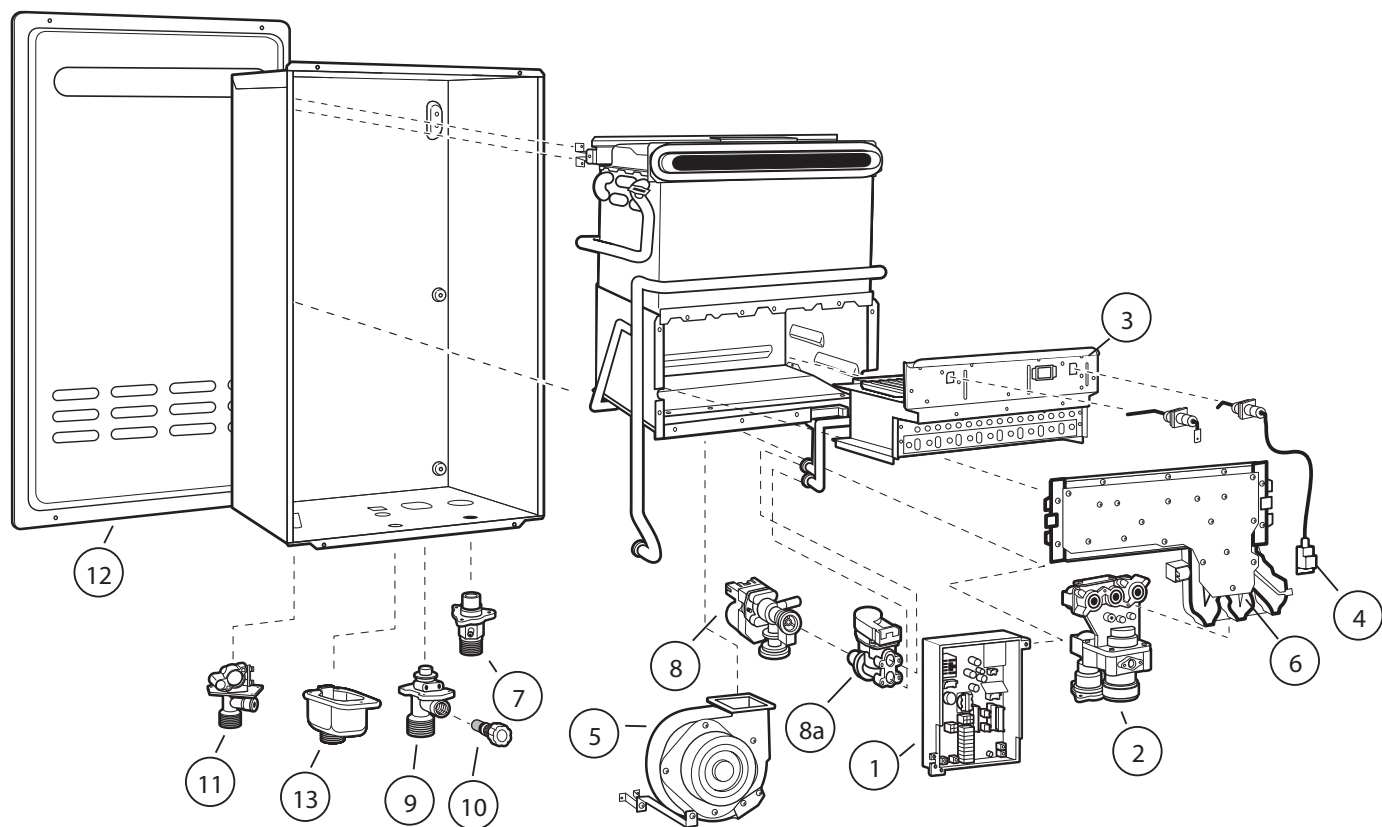
| Fuel Type | RTG-64DVLN/P-1 | RTG-70DVLN/P-1 | RTG-84DVLN/P-1 | RTG-95DVLN/P-1 |
|-----------|----------------|----------------|----------------|----------------|
| Natural | - | - | RTG20250A | RTG20249A |
| Propane | - | - | RTG20250B | RTG20249B |

Parts for RTG-64DVL-1, RTG-70DVL-1, RTG-84DVL-1, RTG-95DVL-1 Series (out of production)

| Ref # | Rheem Part # | Description | RTG-64DVL-1 (out of production) | RTG-70DVL-1 | RTG-84DVL-1 | RTG-95DVL-1 |
|-------|--------------|--|------------------------------------|-------------|-------------|-------------|
| 1 | RTG20235Y | Control Board | • | • | • | • |
| | RTG20164R | Ambient Thermistor - Blue | • | • | • | • |
| | RTG20212BC | Heat Exchanger Thermistor - Yellow | • | • | • | • |
| | RTG20006AR | Inlet Thermistor - White | • | • | • | • |
| | RTG20006BB | Outlet Thermistor - Black | • | • | • | • |
| | RTG20239M | Thermistor Wiring Harness | • | • | • | • |
| 2 | RTG20235AC | Gas Valve Assy | • | • | • | • |
| 3 | RTG20235AD | Burner Assembly | • | • | • | • |
| 6 | RTG20235V | Burner Manifold - NAT | • | • | • | • |
| 6 | RTG20235W | Burner Manifold - LP | • | • | • | • |
| | RTG20212BE | Flame Rod "FL1" (Right) w/gasket | • | • | • | • |
| 8a | RTG20235X | Water Bypass Valve | • | • | • | • |
| | RTG20212J | Freeze Protection | • | • | • | • |
| | RTG20212BG | Flame Rod "Sensor" (Left) with wire and gasket | • | • | • | • |
| | RTG20223M | Flame Rod Wire (Blue) | • | • | • | • |
| | RTG20235AX | Flame Rod Wire (White) | • | • | • | • |
| 4 | RTG20235C | Igniter Coil | • | • | • | • |
| | RTG20212BD | Igniter Rod (Right) w/gasket | • | • | • | • |
| 5 | RTG20212K | Blower Motor | • | • | • | • |
| | RTG20212L | Blower Case | • | • | • | • |
| 7 | RTG20164K | Gas Inlet Connector ¾" | • | • | • | • |
| 8 | RTG20164L | Water Control Valve | • | • | • | • |
| 9 | RTG20164J | Water Inlet Connector ¾" | • | • | • | • |
| 10 | RTG20164AK | Inlet Water Filter | • | • | • | • |
| 11 | RTG20074CE | Hot Water Outlet Connector ¾" | • | • | • | • |
| 12 | RTG20235AU | Front Cover - No Labels or Branding | • | • | • | • |
| 13 | RTG20212U | Remote Control Terminal | • | • | • | • |
| | RTG20164AA | Remote Control Terminal Block | • | • | • | • |
| | RTG20006AV | Drain Plug with Relief | • | • | • | • |
| | RTG20212A | Top Mounting Bracket | • | • | • | • |
| | RTG20212B | Bottom Mounting Bracket | • | • | • | • |
| | RTG20164AB | Screw Pan FT 4X12 | • | • | • | • |
| 14 | RTG20212BB | Concentric Vent Connector Assembly | • | • | • | • |
| | AP20796 | Gas Shutoff Valve ¾" | • | • | • | • |
| | RTG20186 | Replacement Screw Kit | • | • | • | • |
| | RTG20206 | Replacement O-Ring Kit | • | • | • | • |
| | RTG20235AB | Thermostat Assembly | • | • | • | • |
| | RTG20212BH | Flame Rod Gas | | | | |
| | RTG20006CH | Power Cord | | | | |
| | RTG20239BD | 10 Amp Fuse | | | | |
| | RTG20239L | GCV/Igniter Coil Wiring Harness | | | | |
| | RTG20223V | GCV/Fuse Wiring Harness | | | | |

See Pages 6 - 14 for Accessories, Manifold Systems, and Venting Options.

Parts for RTG-64XL-1, RTG-70XL-1, RTG-84XL-1, RTG-95XL-1 Series
(out of production)



Program Chips

| Fuel Type | RTG-64XLN/P-1 | RTG-70XLN/P-1 | RTG-84XLN/P-1 | RTG-95XLN/P-1 |
|-----------|---------------|---------------|---------------|---------------|
| Natural | RTG20235AR | RTG20235BA | RTG20235AL | RTG20235AG |
| Propane | RTG20235AS | RTG20235BB | RTG20235AM | RTG20235AH |

185°F Temperature Upgrade Kits - Commercial and Hydronic

| Fuel Type | RTG-64XLN/P-1 | RTG-70XLN/P-1 | RTG-84XLN/P-1 | RTG-95XLN/P-1 |
|-----------|---------------|---------------|---------------|---------------|
| Natural | - | - | RTG20250C | RTG20249C |
| Propane | - | - | RTG20250D | RTG20249D |

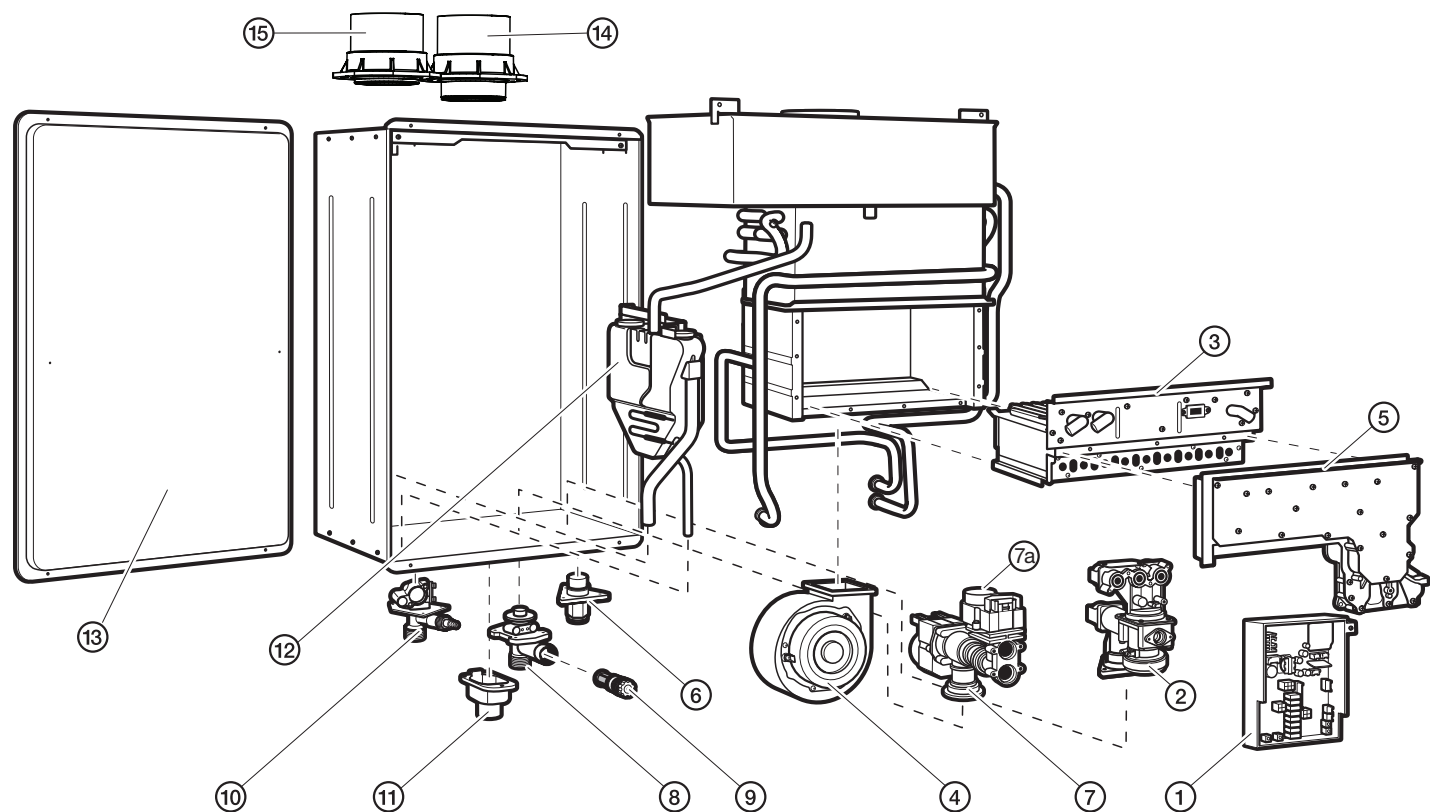
Parts for RTG-64XL-1, RTG-70XL-1, RTG-84XL-1, RTG-95XL-1 Series (out of production)

| Ref # | Rheem Part # | Description | RTG-64XL-1 (out of production) | RTG70XL-1 | RTG-84XL-1 | RTG-95XL-1 |
|-------|--------------|-------------------------------------|-----------------------------------|-----------|------------|------------|
| 1 | RTG20235Y | Control Board | • | • | • | • |
| | RTG20212BC | Heat Exchanger Thermistor - Yellow | • | • | • | • |
| | RTG20006BB | Outlet Thermistor - Black | • | • | • | • |
| | RTG20006AR | Inlet Thermistor - White | • | • | • | • |
| | RTG20006UW | Ambient Thermistor - Blue | • | • | • | • |
| | RTG20239M | Thermistor Wiring Harness | • | • | • | • |
| 2 | RTG20235T | Gas Valve Assy | • | • | • | • |
| | RTG20212J | Freeze Protection | • | • | • | • |
| 3 | RTG20235U | Burner Assembly | • | • | • | • |
| | RTG20212BE | Flame Rod "FL" (Right) w/gasket | • | • | • | • |
| | RTG20212BD | Igniter Rod (Right) w/gasket | • | • | • | • |
| | RTG20235AX | Flame Rod Connector (White) | • | • | • | • |
| 4 | RTG20235C | Igniter Coil | • | • | • | • |
| 5 | RTG20212AB | Blower Motor | • | • | • | • |
| | RTG20212AC | Blower Case | • | • | • | • |
| 6 | RTG20235V | Burner Manifold - NAT | • | • | • | • |
| 6 | RTG20235W | Burner Manifold - LP | • | • | • | • |
| 7 | RTG20164K | Gas Inlet Connector ¾" | • | • | • | • |
| 8 | RTG20164L | Water Control Valve* | • | • | • | • |
| 8a | RTG20235X | Water Bypass Valve | • | • | • | • |
| 9 | RTG20164J | Water Inlet Connector ¾" | • | • | • | • |
| | RTG20006AV | Drain Plug with Relief | • | • | • | • |
| 10 | RTG20164AK | Inlet Water Filter | • | • | • | • |
| 11 | RTG20074CE | Hot Water Outlet Connector ¾" | • | • | • | • |
| | RTG20164AB | Screw Pan FT 4X12 | • | • | • | • |
| 12 | RTG20235AT | Front Cover - No Labels or Branding | • | • | • | • |
| | AP20796 | Gas Shutoff Valve ¾" | • | • | • | • |
| | RTG20186 | Replacement Screw Kit | • | • | • | • |
| | RTG20206 | Replacement O-Ring Kit | • | • | • | • |
| | RTG20235AB | Thermostat Assembly | • | • | • | • |
| 13 | RTG20164AA | Remote Control Terminal Block | • | • | • | • |
| | RTG20212BH | Flame Rod Gaskets | • | • | • | • |
| | RTG20006CH | Power Cord | • | • | • | • |
| | RTG20239BD | 10 Amp Fuse | • | • | • | • |
| | RTG20239L | GCV/Igniter Coil Wiring Harness | • | • | • | • |
| | RTG20223V | GCV/Fuse Wiring Harness | • | • | • | • |

*Units made after 2020 use RTG20164AY

See Pages 6 - 14 for Accessories, Manifold Systems, and Venting Options.

Parts for RTGH-84, RTGH-90, RTGH-95 DV and DVL Series (out of production)



Program Chips

| Fuel Type | RTGH-84DV | RTGH-95DV | RTGH-84DVL | RTGH-90DVL | RTGH-95DVL |
|-----------|-----------|-----------|------------|------------|------------|
| Natural | RTG20228T | RTG20228N | RTG20239G | RTG20239P | RTG20239C |
| Propane | RTG20228U | RTG20228P | RTG20239H | RTG20239R | RTG20239D |

185°F Temperature Upgrade Kits - Commercial and Hydronic

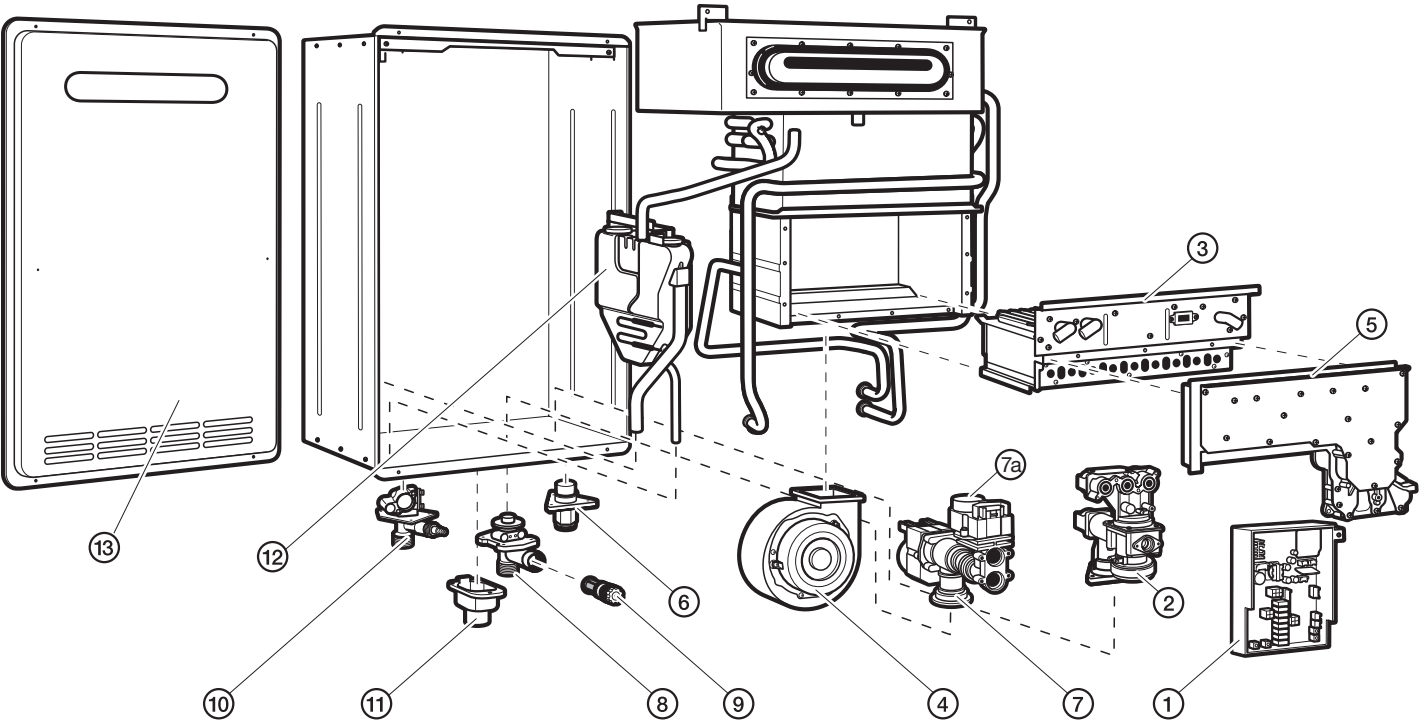
| Fuel Type | RTGH-84DV | RTGH-95DV | RTGH-84DVL | RTGH-90DVL | RTGH-95DVL |
|-----------|-----------|-----------|------------|------------|------------|
| Natural | RTG20225A | RTG20224A | RTG20241A | RTG20244A | RTG20240A |
| Propane | RTG20225B | RTG20224B | RTG20241B | RTG20244B | RTG20240B |

Parts for RTGH-84, RTGH-90, RTGH-95 DV and DVL Series (out of production)

| Ref # | Rheem Part # | Description | RTGH-84DV | RTGH-95DV | RTGH-84DVL | RTGH-90DVL | RTGH-95DVL |
|-------|--------------|---|-----------|-----------|------------|------------|------------|
| 1 | RTG20223P | Control Board | • | • | | | |
| 1 | RTG20239B | Control Board | | | • | • | • |
| | RTG20223D | Inlet Thermistor - White | • | • | | | |
| | RTG20006AR | Inlet Thermistor - White | | | • | • | • |
| | RTG20223G | Heat Exchanger Thermistor - Green | • | • | | | |
| | RTG20212BC | Heat Exchanger Thermistor - Yellow | • | • | • | • | • |
| | RTG20223H | Outlet Thermistor - Black | • | • | | | |
| | RTG20006BB | Outlet Thermistor - Black | | | • | • | • |
| | RTG20223J | Ambient Thermistor - Blue | • | • | | | |
| | RTG20006UW | Ambient Thermistor - Blue | | | • | • | • |
| | RTG20223L | Vent High Temperature Limit Switch | • | • | • | • | • |
| | RTG20223W | Thermistor Wiring Harness | • | • | | | |
| | RTG20239M | Thermistor Wiring Harness | | | • | • | • |
| 2 | RTG20212V | Gas Control Valve | • | • | • | • | • |
| | RTG20223V | Gas Control Wiring Harness | • | • | | | |
| | RTG20239L | Gas Control Wiring Harness | | | • | • | • |
| 3 | RTG20212D | Burner Assembly | • | • | • | • | • |
| | RTG20235C | Igniter Coil | • | • | • | • | • |
| | RTG20212BD | Igniter Rod (IG) (with gasket) | • | • | • | • | • |
| 4 | RTG20212K | Blower Motor | • | • | • | • | • |
| | RTG20223K | Blower Case | • | • | • | • | • |
| 5 | RTG20212F | Burner Manifold LP | • | • | | | |
| 5 | RTG20235B | Burner Manifold - LP | | | • | • | • |
| 5 | RTG20212X | Burner Manifold NAT | • | • | | | |
| 5 | RTG20239A | Burner Manifold NAT | | | • | • | • |
| | RTG20212BE | Flame Rod FL-1 (with gasket) | • | • | • | • | • |
| | RTG20212P | Flame Rod Wire (White) | • | • | • | • | • |
| | RTG20212BG | Flame Rod FL-2 (with gasket) | • | • | • | • | • |
| | RTG20223M | Flame Rod Wire (Blue) | • | • | • | • | • |
| 6 | RTG20164K | Gas Inlet Connector ¾" | • | • | • | • | • |
| 7 | RTG20223E | Water Control Valve | • | • | | | |
| 7 | RTG20164L | Water Control Valve | | | • | • | • |
| 7a | RTG20235X | Bypass Assembly | • | • | • | • | • |
| 8 | RTG20164J | Water Inlet Connector ¾" | • | • | • | • | • |
| 9 | RTG20164AK | Inlet Water Filter | • | • | • | • | • |
| 10 | RTG20074CE | Hot Water Outlet Connector ¾" | • | • | • | • | • |
| 11 | RTG20164AA | Remote Control Terminal Block | • | • | • | • | • |
| | RTG20212U | Remote Control Terminal | • | • | • | • | • |
| 12 | RTG20223F | Neutralization Replacement Kit for DV series | • | • | | | |
| 12 | RTG20239N | Neutralization Replacement Kit for DVL series | | | • | • | • |
| 13 | RTG20223B | Front Cover - No Labels or Branding | • | • | • | • | • |
| 14 | RTG20223Y | Exhaust Vent Outlet Connector - PVC | • | • | • | • | • |
| 15 | RTG20223X | Air Intake Inlet Connector - PVC | • | • | • | • | • |
| | AP20796 | Gas Shutoff Valve ¾" | • | • | • | • | • |
| | RTG20186 | Replacement Screw Kit | • | • | • | • | • |
| | RTG20206 | Replacement O-Ring Kit | • | • | • | • | • |
| | RTG20212BH | Flame Rod Gaskets | • | • | • | • | • |
| | RTG20006CH | Power Cord | • | • | • | • | • |
| | RTG20239BD | 10 Amp Fuse | • | • | • | • | • |
| | RTG20239L | GCV/Igniter Coil Wiring Farness | • | • | • | • | • |
| | RTG20223V | GCV/Fuse Wiring Farness | • | • | • | • | • |

See Pages 6 - 14 for Accessories, Manifold Systems, and Venting Options.

Parts for RTGH-84, RTGH-90, RTGH-95 X and XL Series (out of production)



Program Chips

| Fuel Type | RTGH-84X | RTGH-95X | RTGH-84XL | RTGH-90XL | RTGH-95XL |
|-----------|-----------|-----------|-----------|-----------|-----------|
| Natural | RTG20228V | RTG20228R | RTG20239J | RTG20239S | RTG20239E |
| Propane | RTG20228W | RTG20228S | RTG20239K | RTG20239T | RTG20239F |

185°F Temperature Upgrade Kits - Commercial and Hydronic

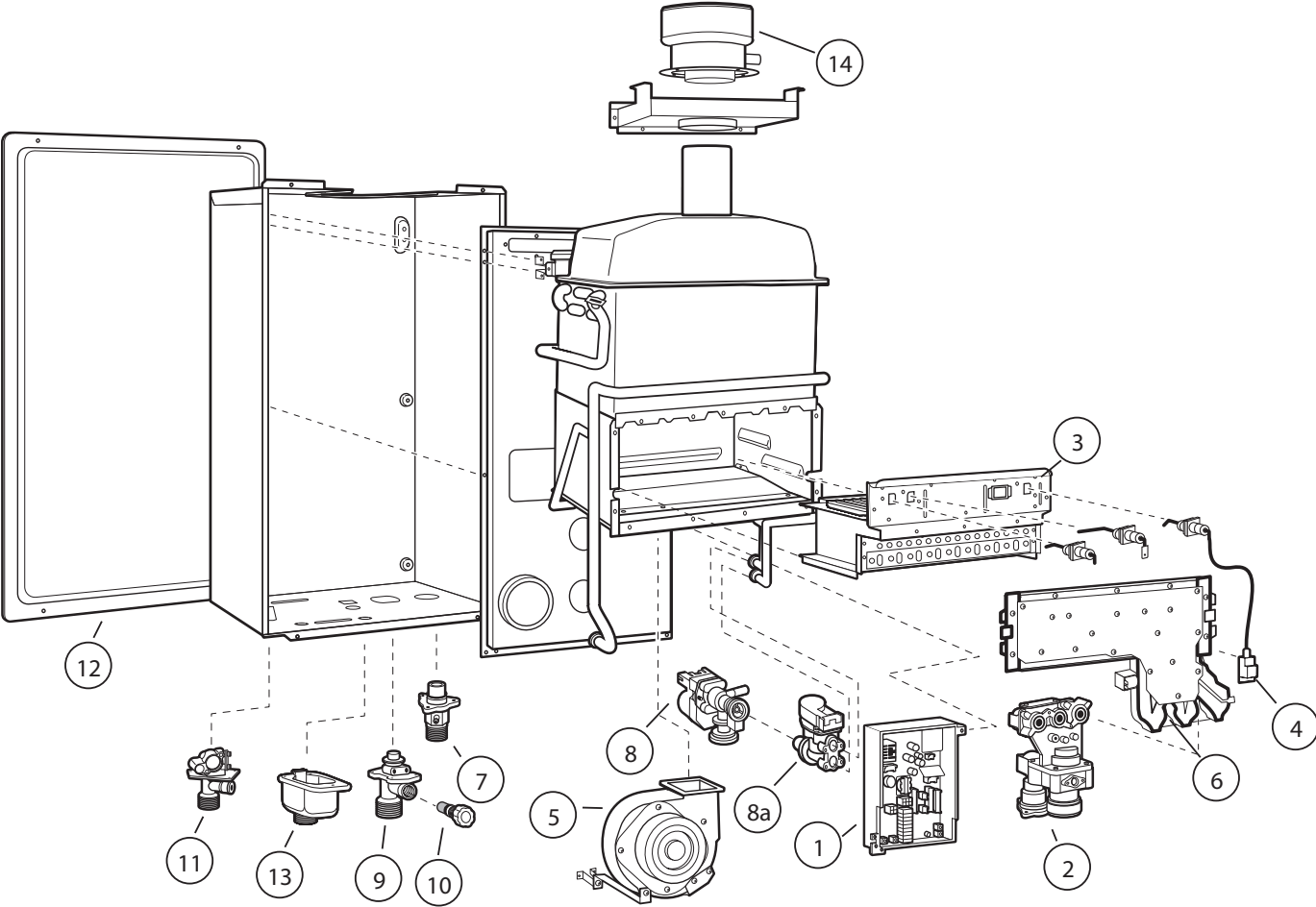
| Fuel Type | RTGH-84X | RTGH-95X | RTGH-84XL | RTGH-90XL | RTGH-95XL |
|-----------|-----------|-----------|-----------|-----------|-----------|
| Natural | RTG20225C | RTG20224C | RTG20241C | RTG20244C | RTG20240C |
| Propane | RTG20225D | RTG20224D | RTG20241D | RTG20244D | RTG20240D |

Parts for RTGH-84, RTGH-95 X and XL Series (out of production)

| Ref # | Rheem Part # | Description | RTGH-84X | RTGH-95X | RTGH-84XL | RTGH-90XL | RTGH-95XL |
|-------|--------------|---|----------|----------|-----------|-----------|-----------|
| 1 | RTG20223P | Control Board | • | • | | | |
| | RTG20239B | Control Board | | | • | • | • |
| | RTG20223D | Inlet Thermistor - White | • | • | | | |
| | RTG20006AR | Inlet Thermistor - White | | | • | • | • |
| | RTG20223G | Heat Exchanger Thermistor - Green | • | • | | | |
| | RTG20212BC | Heat Exchanger Thermistor - Yellow | • | • | • | • | • |
| | RTG20223H | Outlet Thermistor - Black | • | • | | | |
| | RTG20006BB | Outlet Thermistor - Black | | | • | • | • |
| | RTG20223J | Ambient Thermistor - Blue | • | • | | | |
| | RTG20006UW | Ambient Thermistor - Blue | | | • | • | • |
| | RTG20223W | Thermistor Wiring Harness | • | • | | | |
| | RTG20239M | Thermistor Wiring Harness | | | • | • | • |
| 2 | RTG20212V | Gas Control Valve | • | • | • | • | • |
| | RTG20223V | Gas Control Wiring Harness | • | • | | | |
| | RTG20239L | Gas Control Wiring Harness | | | • | • | • |
| 3 | RTG20212W | Burner Assembly | • | • | • | • | • |
| | RTG20235C | Igniter Coil | • | • | • | • | • |
| | RTG20212BD | Igniter Rod (IG) (with gasket) | • | • | • | • | • |
| 4 | RTG20212AB | Blower Motor | • | • | • | • | • |
| | RTG20212AC | Blower Case | • | • | • | • | • |
| 5 | RTG20212F | Burner Manifold LP | • | • | | | |
| 5 | RTG20235B | Burner Manifold - LP | | | • | • | • |
| 5 | RTG20212X | Burner Manifold NAT | • | • | | | |
| 5 | RTG20235A | Burner Manifold NAT | | | • | • | • |
| | RTG20212BE | Flame Rod FL-1 (with gasket) | • | • | • | • | • |
| | RTG20212P | Flame Rod Wire (White) | • | • | • | • | • |
| 6 | RTG20164K | Gas Inlet Connector ¾" | • | • | • | • | • |
| 7 | RTG20223E | Water Control Valve | • | • | | | |
| 7 | RTG20164L | Water Control Valve | | | • | • | • |
| 7a | RTG20235X | Bypass Assembly | • | • | • | • | • |
| 8 | RTG20164J | Water Inlet Connector ¾" | • | • | • | • | • |
| 9 | RTG20164AK | Inlet Water Filter | • | • | • | • | • |
| 10 | RTG20074CE | Hot Water Outlet Connector ¾" | • | • | • | • | • |
| | RTG20006AV | Drain Plug with Relief | • | • | • | • | • |
| 11 | RTG20164AA | Remote Control Terminal Block | • | • | • | • | • |
| | RTG20212U | Remote Control Terminal | • | • | • | • | • |
| 12 | RTG20223F | Neutralization Replacement Kit for DV series | • | • | | | |
| 12 | RTG20239N | Neutralization Replacement Kit for DVL series | | | • | • | • |
| 13 | RTG20223A | Front Cover - No Labels or Branding | • | • | • | • | • |
| | AP20796 | Gas Shutoff Valve ¾" | • | • | • | • | • |
| | RTG20186 | Replacement Screw Kit | • | • | • | • | • |
| | RTG20206 | Replacement O-Ring Kit | • | • | • | • | • |
| | RTG20212BH | Flame Rod Gaskets | • | • | • | • | • |
| | RTG20006CH | Power Cord | • | • | • | • | • |
| | RTG20239BD | 10 Amp Fuse | • | • | • | • | • |
| | RTG20239L | GCV/Igniter Coil Wiring Harness | • | • | • | • | • |
| | RTG20223V | GCV/Fuse Wiring Harness | • | • | • | • | • |

See Pages 6 - 14 for Accessories, Manifold Systems, and Venting Options.

Parts for RTG-64, RTG-84, RTG-95, DV and DVL Series (out of production)



Program Chips

| Fuel Type | RTG-64DV | RTG-84DV | RTG-95DV | RTG-64DVL | RTG-84DVL | RTG-95DVL |
|-----------|------------|------------|-----------|-----------|-----------|-----------|
| Natural | RTG20212AV | RTG20212AL | RTG20212S | RTG20235N | RTG20235J | RTG20235E |
| Propane | RTG20212AW | RTG20212AM | RTG20212T | RTG20235P | RTG20235K | RTG20235F |

185°F Temperature Upgrade Kits - Commercial and Hydronic

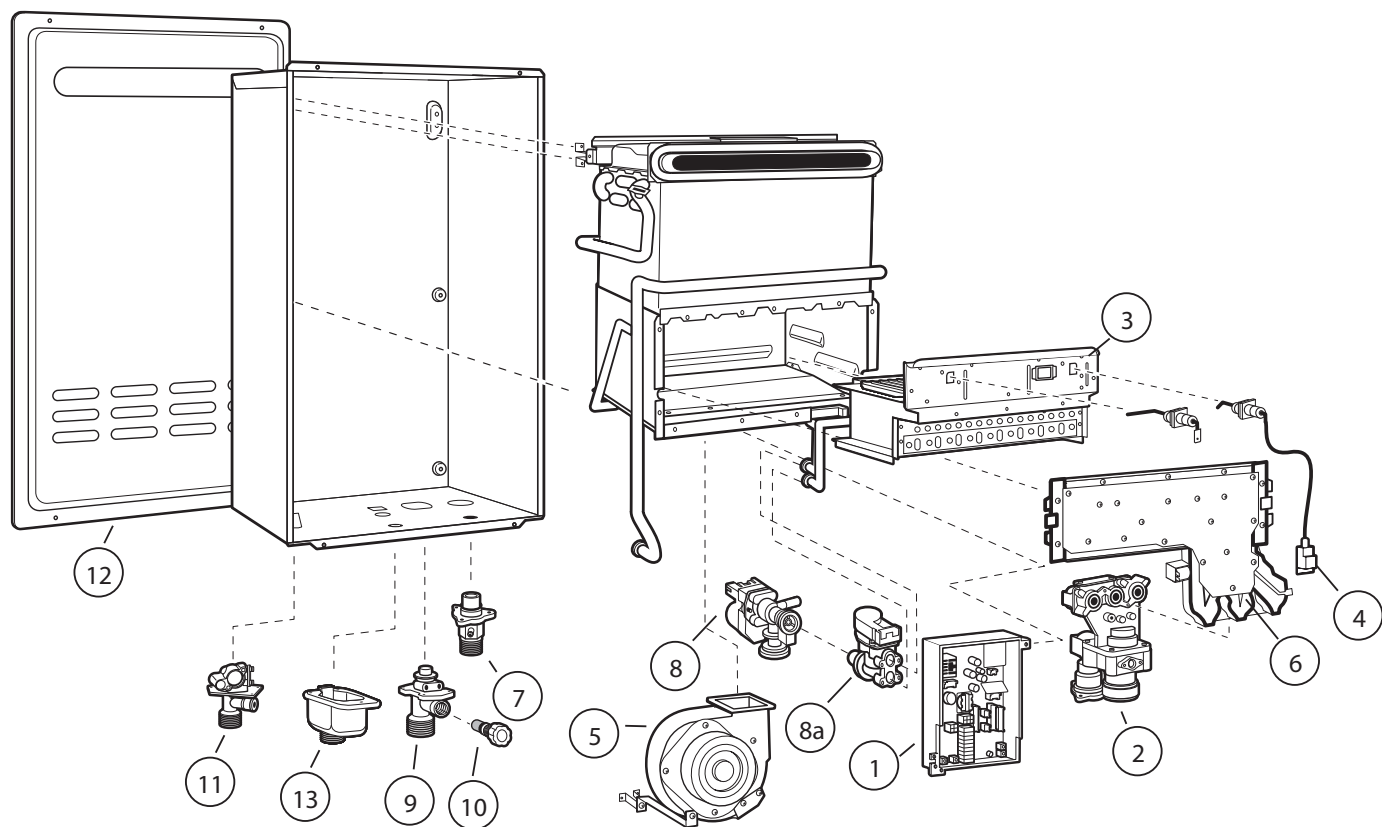
| Fuel Type | RTG-64DV | RTG-84DV | RTG-95DV | RTG-64DVL | RTG-84DVL | RTG-95DVL |
|-----------|----------|-----------|-----------|-----------|-----------|-----------|
| Natural | — | RTG20216A | RTG20214A | — | RTG20237A | RTG20236A |
| Propane | — | RTG20216B | RTG20214B | — | RTG20237B | RTG20236B |

Parts for RTG-64, RTG-84, RTG-95, DV and DVL Series (out of production)

| Ref # | Rheem Part # | Description | RTG-64DV | RTG-84DV | RTG-95DV | RTG-64DVL | RTG-84DVL | RTG-95DVL |
|-------|--------------|-------------------------------------|----------|----------|----------|-----------|-----------|-----------|
| 1 | RTG20212R | Control Board | • | • | • | | | |
| | RTG20235D | Control Board | | | | • | • | • |
| | RTG20164R | Ambient Thermistor - Blue | • | • | • | • | • | • |
| | RTG20212BC | Heat Exchanger Thermistor - Yellow | • | • | • | • | • | • |
| | RTG20006AR | Inlet Thermistor - White | • | • | • | • | • | • |
| | RTG20006BB | Outlet Thermistor - Black | • | • | • | • | • | • |
| | RTG20239M | Thermistor Wiring Harness | • | • | • | • | • | • |
| 2 | RTG20212C | Gas Valve Assy | • | • | • | • | • | • |
| 3 | RTG20212D | Burner Assembly | • | • | • | • | • | • |
| 6 | RTG20212E | Burner Manifold - NAT | • | • | • | | | |
| | RTG20235A | Burner Manifold - NAT | | | | • | • | • |
| 6 | RTG20212F | Burner Manifold - LP | • | • | • | | | |
| | RTG20235B | Burner Manifold - LP | | | | • | • | • |
| | RTG20212BE | Flame Rod "FL1" (Right) w/gasket | • | • | • | • | • | • |
| | RTG20212J | Gas Control Resistor | • | • | • | • | • | • |
| | RTG20212BG | Flame Rod "Sensor" (Left) w/gasket | • | • | • | • | • | • |
| | RTG20212N | Flame Rod Wire (Blue) | • | • | • | • | • | • |
| | RTG20212P | Flame Rod Wire (White) | • | • | • | • | • | • |
| 4 | RTG20235C | Igniter Coil | • | • | • | • | • | • |
| | RTG20212BD | Igniter Rod (Right) w/gasket | • | • | • | • | • | • |
| 5 | RTG20212K | Blower Motor | • | • | • | • | • | • |
| | RTG20212L | Blower Case | • | • | • | • | • | • |
| 7 | RTG20164K | Gas Inlet Connector ¾" | • | • | • | • | • | • |
| 8 | RTG20164L | Water Control Valve | • | • | • | • | • | • |
| 8a | RTG20235X | Water Bypass Valve | • | • | • | • | • | • |
| 9 | RTG20164J | Water Inlet Connector ¾" | • | • | • | • | • | • |
| 10 | RTG20164AK | Inlet Water Filter | • | • | • | • | • | • |
| 11 | RTG20074CE | Hot Water Outlet Connector ¾" | • | • | • | • | • | • |
| 12 | RTG20212BA | Front Cover - No Labels or Branding | • | • | • | • | • | • |
| 13 | RTG20212U | Remote Control Terminal | • | • | • | • | • | • |
| | RTG20164AA | Remote Control Terminal Block | • | • | • | • | • | • |
| | RTG20006AV | Drain Plug with Relief | • | • | • | • | • | • |
| | RTG20212A | Top Mounting Bracket | • | • | • | • | • | • |
| | RTG20212B | Bottom Mounting Bracket | • | • | • | • | • | • |
| | RTG20164AB | Screw Pan FT 4X12 | • | • | • | • | • | • |
| 14 | RTG20212BB | Concentric Vent Connector Assembly | • | • | • | • | • | • |
| | AP20796 | Gas Shutoff Valve ¾" | • | • | • | • | • | • |
| | RTG20186 | Replacement Screw Kit | • | • | • | • | • | • |
| | RTG20206 | Replacement O-Ring Kit | • | • | • | • | • | • |
| | RTG20212N | Generic Flame Rod Wires | | | | | | |
| | RTG20212BH | Flame Rod Gaskets | | | | | | |
| | RTG20006CH | Power Cord | | | | | | |
| | RTG20239BD | 10 Amp Fuse | | | | | | |
| | RTG20239L | GCV/Igniter Coil Wiring Harness | | | | | | |
| | RTG20212J | GCV Resistor | | | | | | |

See Pages 6 - 14 for Accessories, Manifold Systems, and Venting Options.

Parts for RTG-64, RTG-84, RTG-95, X and XL Series (out of production)



Program Chips

| Fuel Type | RTG-64X | RTG-84X | RTG-95X | RTG-64XL | RTG-84XL | RTG-95XL |
|-----------|------------|------------|------------|-----------|-----------|-----------|
| Natural | RTG20212AE | RTG20212AN | RTG20212AX | RTG20235R | RTG20235L | RTG20235G |
| Propane | RTG20212AH | RTG20212AP | RTG20212AY | RTG20235S | RTG20235M | RTG20235H |

185°F Temperature Upgrade Kits - Commercial and Hydronic

| Fuel Type | RTG-64X | RTG-84X | RTG-95X | RTG-64XL | RTG-84XL | RTG-95XL |
|-----------|---------|-----------|-----------|----------|-----------|-----------|
| Natural | — | RTG20216C | RTG20214C | — | RTG20237C | RTG20236C |
| Propane | — | RTG20216D | RTG20214D | — | RTG20237D | RTG20236D |

Parts for RTG-64, RTG-84, RTG-95, X and XL Series (out of production)

| Ref # | Rheem Part # | Description | RTG-64X | RTG-84X | RTG-95X | RTG-64XL | RTG-84XL | RTG-95XL |
|-------|--------------|-------------------------------------|---------|---------|---------|----------|----------|----------|
| 1 | RTG20212AD | Control Board | • | • | • | | | |
| | RTG20235D | Control Board | | | | • | • | • |
| | RTG20212BC | Heat Exchanger Thermistor - Yellow | • | • | • | • | • | • |
| | RTG20006BB | Outlet Thermistor - Black | • | • | • | • | • | • |
| | RTG20006AR | Inlet Thermistor - White | • | • | • | • | • | • |
| | RTG20006UW | Ambient Thermistor - Blue | • | • | • | • | • | • |
| | RTG20239M | Thermistor Wiring Harness | • | • | • | • | • | • |
| 2 | RTG20212V | Gas Valve Assy | • | • | • | • | • | • |
| | RTG20212J | Gas Control Resister | • | • | • | • | • | • |
| 3 | RTG20212W | Burner Assembly | • | • | • | • | • | • |
| | RTG20212BE | Flame Rod "FL" (Right) w/gasket | • | • | • | • | • | • |
| | RTG20212BD | Igniter Rod (Right) w/gasket | • | • | • | • | • | • |
| | RTG20212P | Flame Rod Connector (White) | • | • | • | • | • | • |
| 4 | RTG20235C | Igniter Coil | • | • | • | • | • | • |
| 5 | RTG20212AB | Blower Motor | • | • | • | • | • | • |
| | RTG20212AC | Blower Case | • | • | • | • | • | • |
| 6 | RTG20212X | Burner Manifold - NAT | • | • | • | | | |
| | RTG20235A | Burner Manifold - NAT | | | | • | • | • |
| | RTG20212F | Burner Manifold - LP | • | • | • | | | |
| | RTG20235B | Burner Manifold - LP | | | | • | • | • |
| 7 | RTG20164K | Gas Inlet Connector ¾" | • | • | • | • | • | • |
| 8 | RTG20164L | Water Control Valve | • | • | • | • | • | • |
| 8a | RTG20235X | Water Bypass Valve | • | • | • | • | • | • |
| 9 | RTG20164J | Water Inlet Connector ¾" | • | • | • | • | • | • |
| | RTG20006AV | Drain Plug with Relief | • | • | • | • | • | • |
| 10 | RTG20164AK | Inlet Water Filter | • | • | • | • | • | • |
| 11 | RTG20074CE | Hot Water Outlet Connector ¾" | • | • | • | • | • | • |
| 12 | RTG20212AZ | Front Cover - No Labels or Branding | • | • | • | • | • | • |
| | AP20796 | Gas Shutoff Valve ¾" | • | • | • | • | • | • |
| | RTG20186 | Replacement Screw Kit | • | • | • | • | • | • |
| | RTG20206 | Replacement O-Ring Kit | • | • | • | • | • | • |
| 13 | RTG20212U | Remote Control Terminal | • | • | • | • | • | • |
| | RTG20164AA | Remote Control Terminal Block | • | • | • | • | • | • |
| | RTG20164AB | Screw Pan FT 4X12 | • | • | • | • | • | • |
| | RTG20212BH | Flame Rod Gaskets | • | • | • | • | • | • |
| | RTG20006CH | Power Cord | • | • | • | • | • | • |
| | RTG20239BD | 10 Amp Fuse | • | • | • | • | • | • |
| | RTG20239L | GCV/Igniter Coil wiring harness | • | • | • | • | • | • |
| | RTG20223V | GCV/Fuse wiring harness | • | • | • | • | • | • |

See Pages 6 - 14 for Accessories, Manifold Systems, and Venting Options.



Rheem helps you give your customers the **value**, **performance** and **features** they want. From our tried and true tank-type water heaters to our space-saving tankless solutions that provide continuous hot water, Rheem has something to **satisfy the budgets** and lifestyles of every customer.

In addition to our large selection of **water heating solutions**, Rheem also has a full line of **heating and cooling** products, parts and accessories for warm winter nights, cool summer days and hot water all year long.



The new degree of comfort.®

In keeping with its policy of continuous progress and improvement, Rheem reserves the right to make changes without notice.

Rheem Replacement Parts • 4744 Island Ford Road
Randleman, NC 27317 • Customer Service: 800-621-5622
www.rheemparts.com



INTEGRATED HOME COMFORT

Rheem.com

PRINTED IN USA 09/23 TKPP-101 Rev 10